



Dickson Road, London SE9

London

£535,000

## 23 Dickson Road

London

Chain-free family home in sought-after Progress Estate. Spacious, flexible layout, garden, close to schools, shops, parks and Eltham station. Characterful area with strong community feel.

Council Tax band: D

Tenure: Freehold

EPC Energy Efficiency Rating: D

EPC Environmental Impact Rating: D

- Chain-free
- Large Garden
- Private Driveway
- Ideal renovation project
- Excellent transport links nearby
- Gas central heating

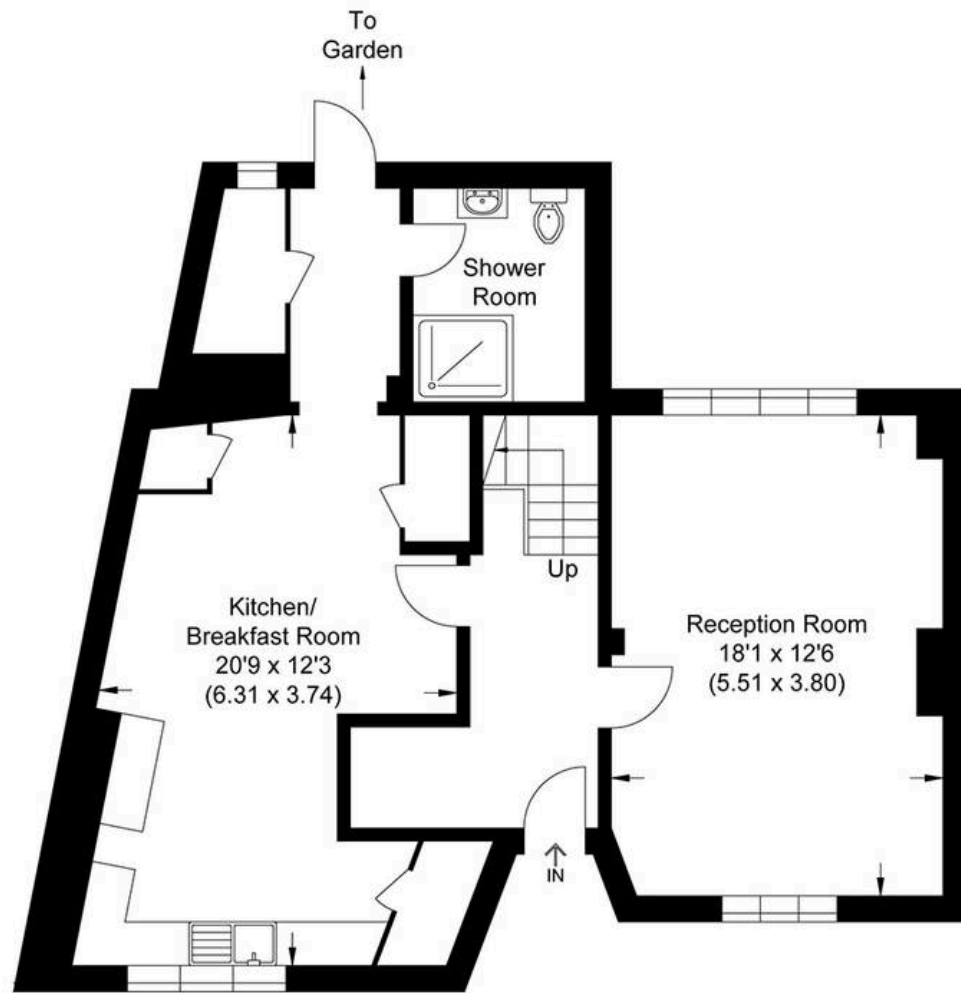




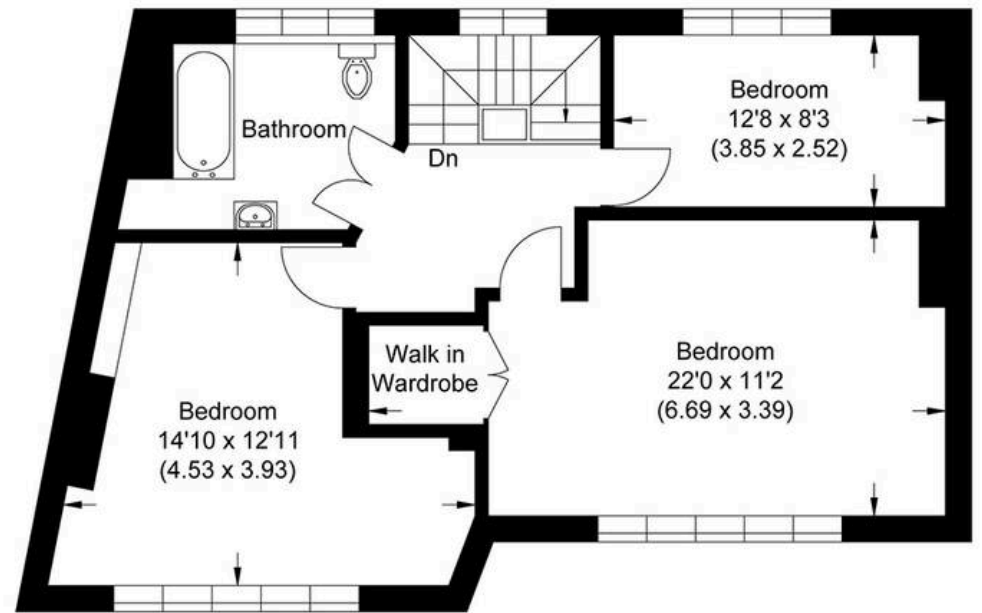




Approximate Gross Internal Area  
126.40 sq m / 1360.55 sq ft



Ground Floor



First Floor

Illustration for identification purposes only, measurements are approximate, not to scale.



## MA-Residential

1st Floor Romer House, 132 Lewisham High Street, London - SE13 6EE

020 8264 4464

[hello@ma-residential.com](mailto:hello@ma-residential.com)

[ma-residential.com](http://ma-residential.com)