



Eglinton Road, London SE18

London

£220,000

116B Eglinton Road

London

Spacious first-floor one-bedroom flat in a period building on Eglinton Road. Chain free, ideal for renovation. Close to transport, shops and green spaces. Great potential to add value.

Council Tax band: B

Tenure: Leasehold

EPC Energy Efficiency Rating: C

EPC Environmental Impact Rating: C

- One-bedroom top floor flat
- Generous Size
- Chain-free sale
- Ideal renovation project
- Excellent transport links nearby
- Gas Central Heating

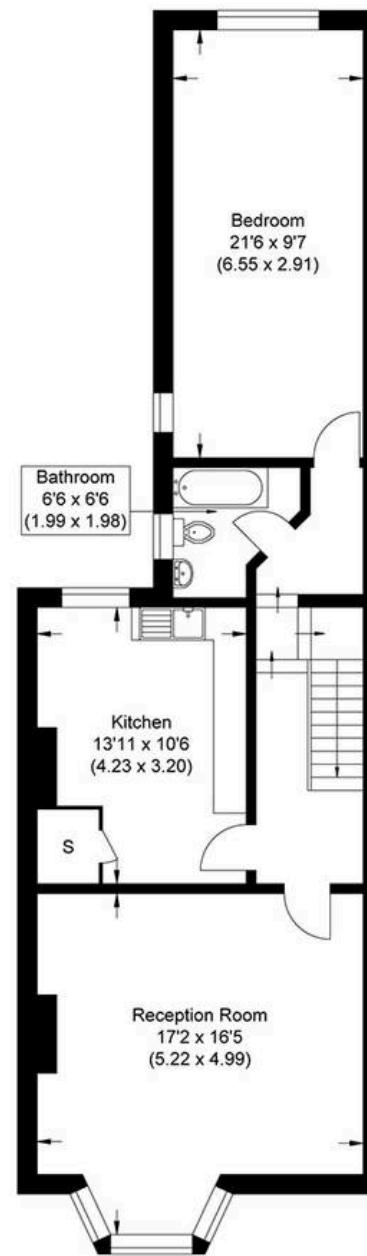








Approximate Gross Internal Area
70.59 sq m / 759.82 sq ft



First Floor

Illustration for identification purposes only, measurements are approximate, not to scale.



MA-Residential

1st Floor Romer House, 132 Lewisham High Street, London - SE13 6EE

020 8264 4464

hello@ma-residential.com

ma-residential.com