



Ealdham Square, London SE9

London

£425,000

10 Ealdham Square

London

Three-bedroom Eltham home with large garden, two garages, and scope for modernisation. Ideal for families or buyers seeking a project. Early viewing recommended.

Council Tax band: C

Tenure: Freehold

EPC Energy Efficiency Rating: E

EPC Environmental Impact Rating: E

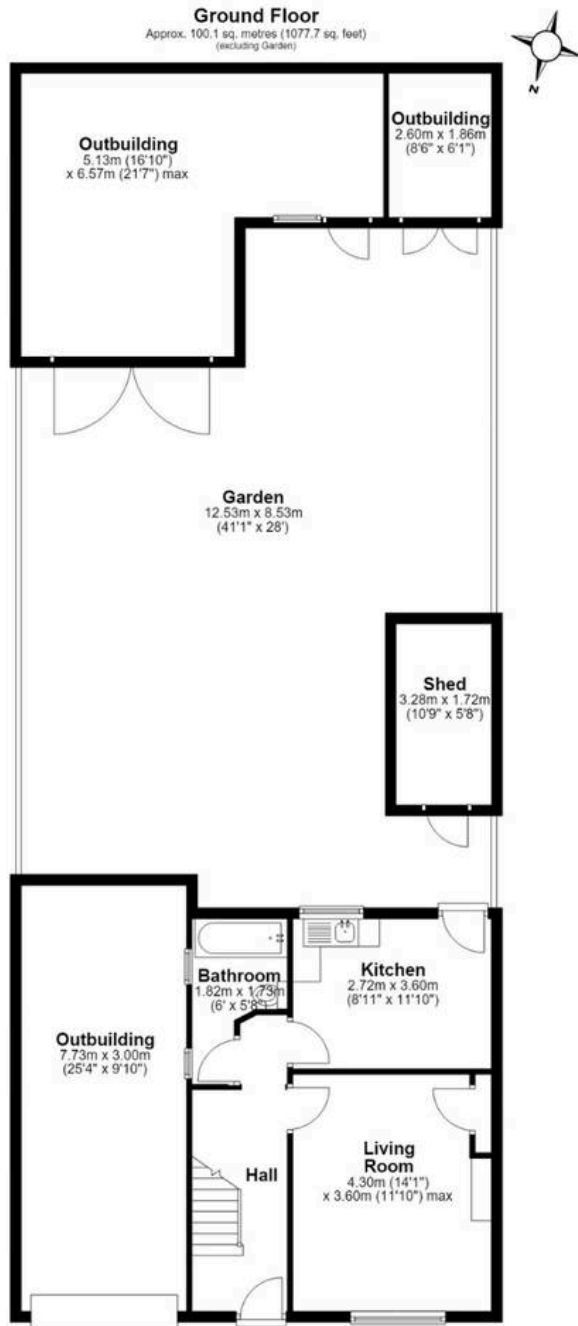
- Chain-free
- Private rear garden
- Large Driveway
- Ideal renovation project
- Excellent transport links nearby
- Gas central heating



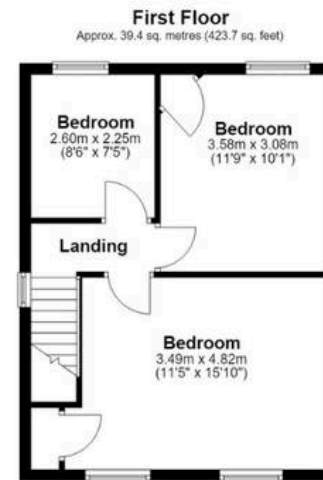








Gross Total Area = 139.5 sq. metres / 1501.4 sq. feet
Total House Area = 78.1 sq. metres / 839.8 sq. feet



This floor plan has been created by a third party and should be used as a general outline for guidance only. Any areas, measurements or distances quoted are approximate and any intending purchaser or lessee should satisfy themselves by inspection, searches, enquiries and/or full survey as to the correctness of each statement. We accept no responsibility or liability for any loss whatsoever that may arise as a result of this plan and the information contained within.
 © @modephoto.uk | www.modephoto.co.uk
 Plan produced using PlanUp.



MA-Residential

1st Floor Romer House, 132 Lewisham High Street, London - SE13 6EE

020 8264 4464

hello@ma-residential.com

ma-residential.com