



26a Bishopsthorpe Road, London

London

£475,000

26a Bishopsthorpe Road

London

Spacious three-bedroom ground floor apartment in Sydenham with private entrance, large garden, and 1,000 sq ft. Close to transport, parks, shops, and cafes. Ideal for families or professionals.

Council Tax band: D

Tenure: Leasehold

EPC Energy Efficiency Rating: D

EPC Environmental Impact Rating: E

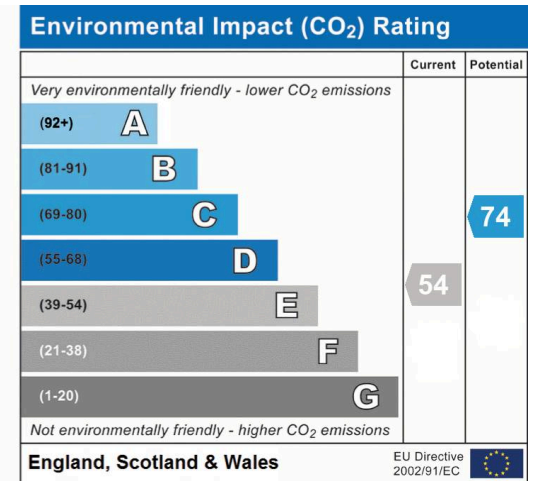
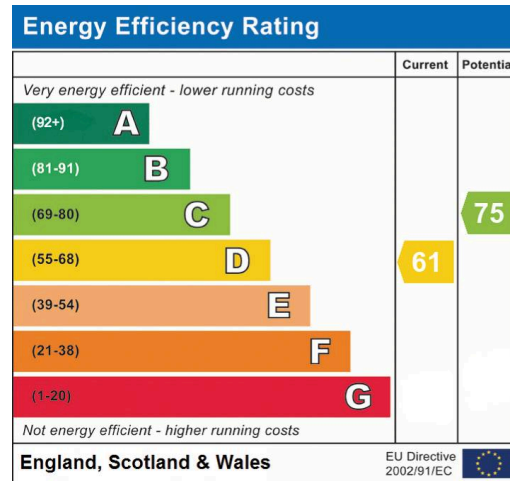
- Chain-free
- Private gardens
- Ideal renovation project
- Excellent Transport Links Nearby
- Gas Central Heating
- Long Lease











Approximate Gross Internal Area
93.0 sq m / 1001.04 sq ft

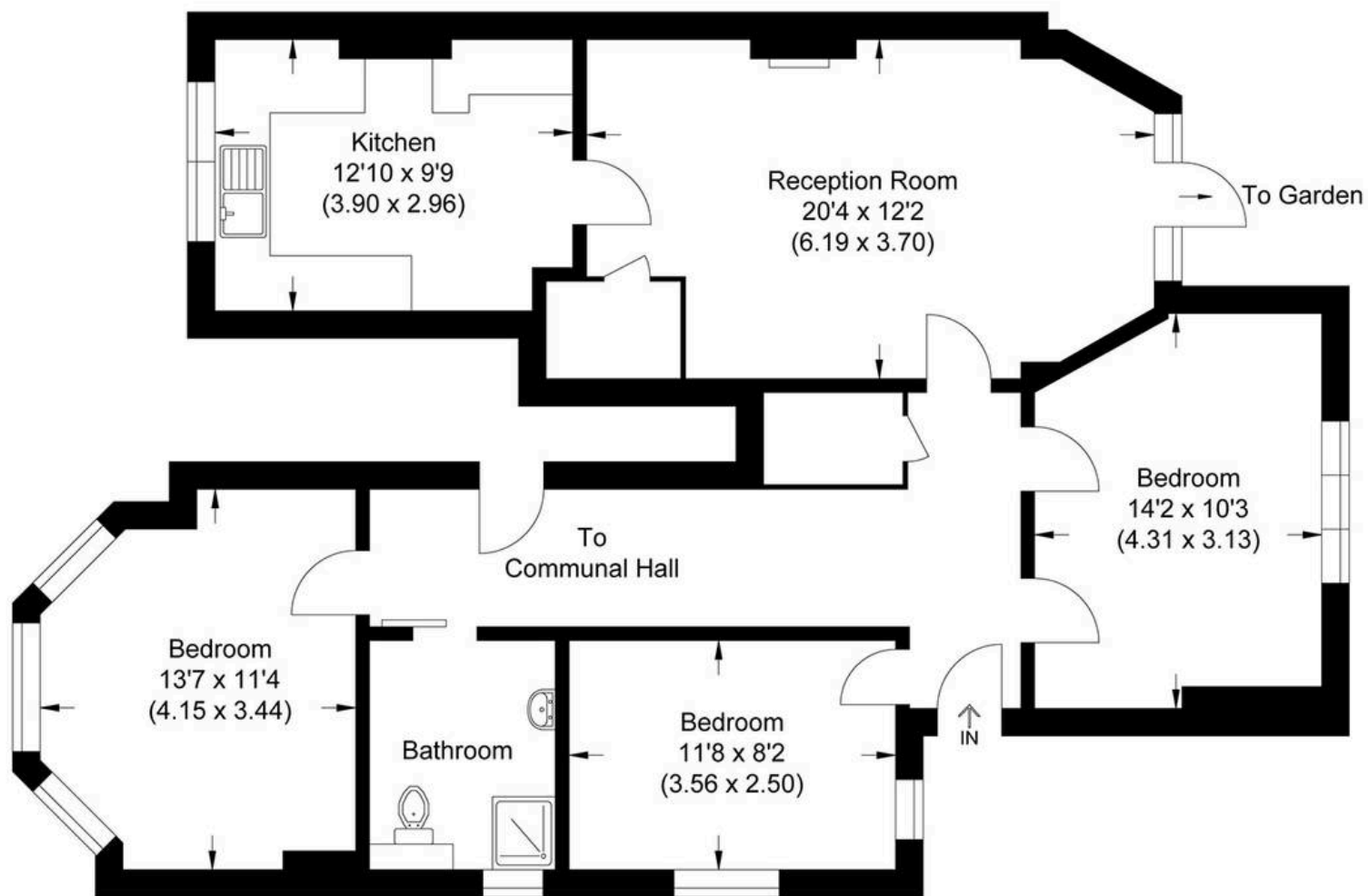


Illustration for identification purposes only, measurements are approximate, not to scale.



MA-Residential

1st Floor Romer House, 132 Lewisham High Street, London - SE13 6EE

020 8264 4464

hello@ma-residential.com

ma-residential.com/