



9 Bruce Court, 121 Main Road

Sidcup

£190,000

9 Bruce Court

Sidcup

Bright one-bedroom flat in central Sidcup, chain-free, long lease, residents' parking, near shops and station. Ideal for first-time buyers seeking a home to modernise.

Council Tax band: B

Tenure: Leasehold

EPC Energy Efficiency Rating: C

EPC Environmental Impact Rating: B

- Chain-free
- Communal Garden
- Double Glazing
- Ideal renovation project
- Excellent Transport Links Nearby
- Gas Central Heating



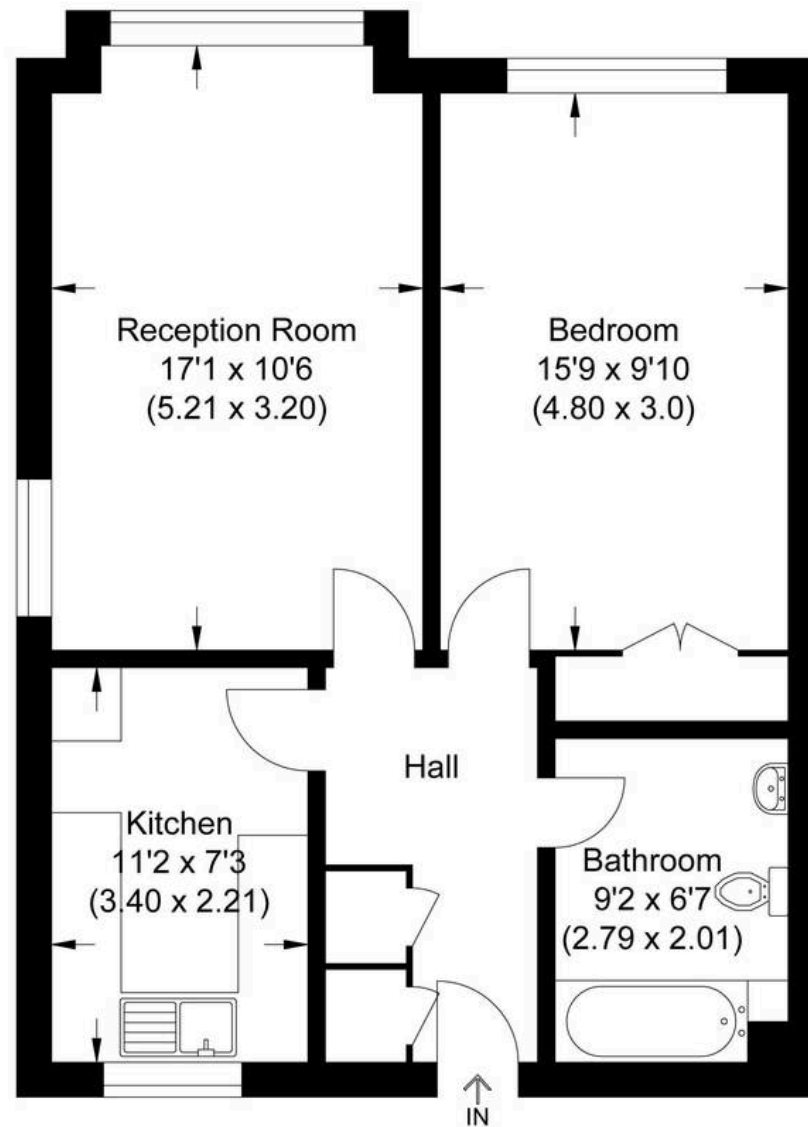








Approximate Gross Internal Area
53.99 sq m / 581.14 sq ft



Second Floor

Illustration for identification purposes only, measurements are approximate, not to scale.



MA-Residential

1st Floor Romer House, 132 Lewisham High Street, London - SE13 6EE

020 8264 4464

hello@ma-residential.com

ma-residential.com/