



17 Somerset Gardens, London

£475,000

London

17 Somerset Gardens

London

Chain-free three-bed maisonette in a Lewisham conservation area. Private entrance, 941 sq ft, shared garden, scope to modernise, near shops, schools, green spaces, and transport links.

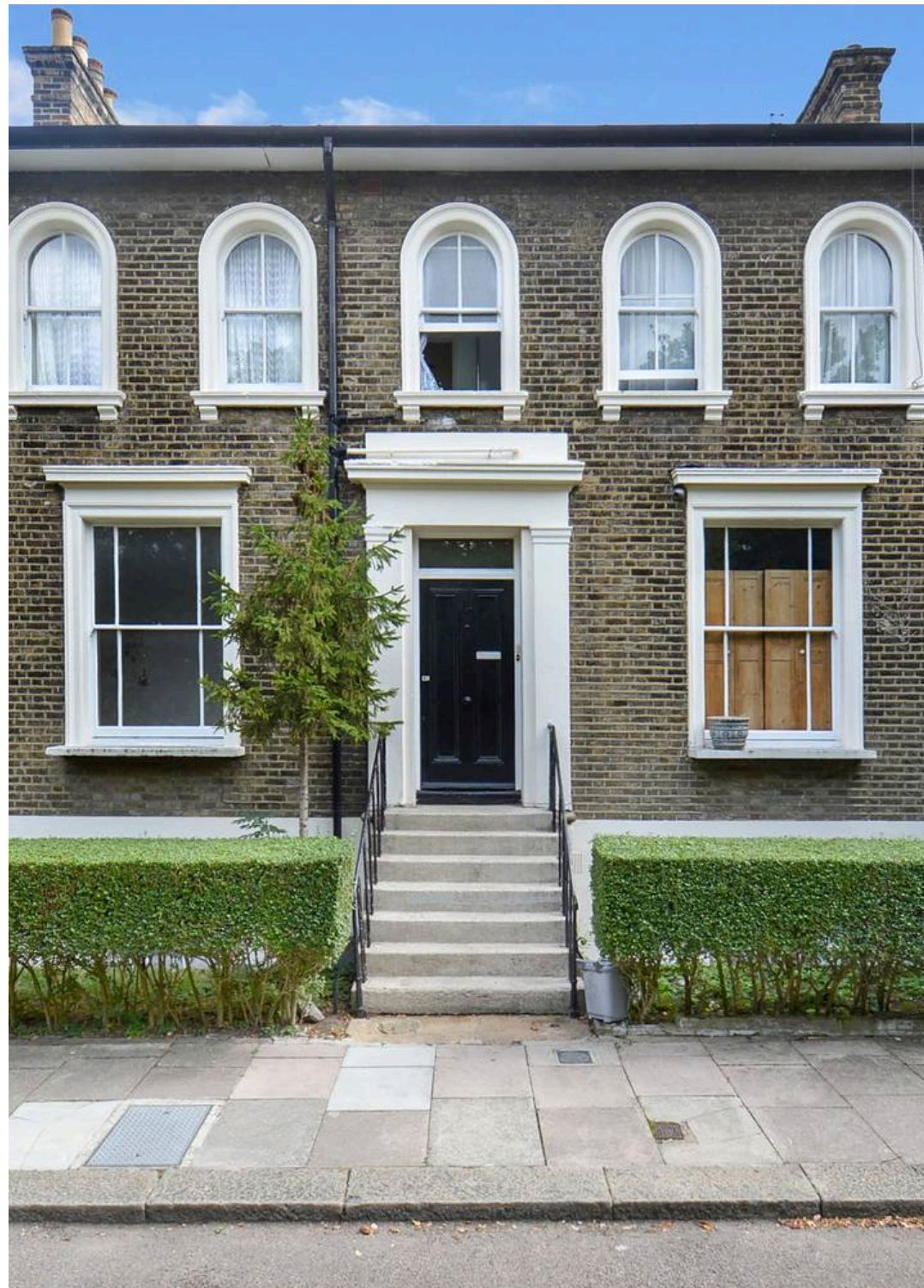
Council Tax band: C

Tenure: Leasehold

EPC Energy Efficiency Rating: D

EPC Environmental Impact Rating:

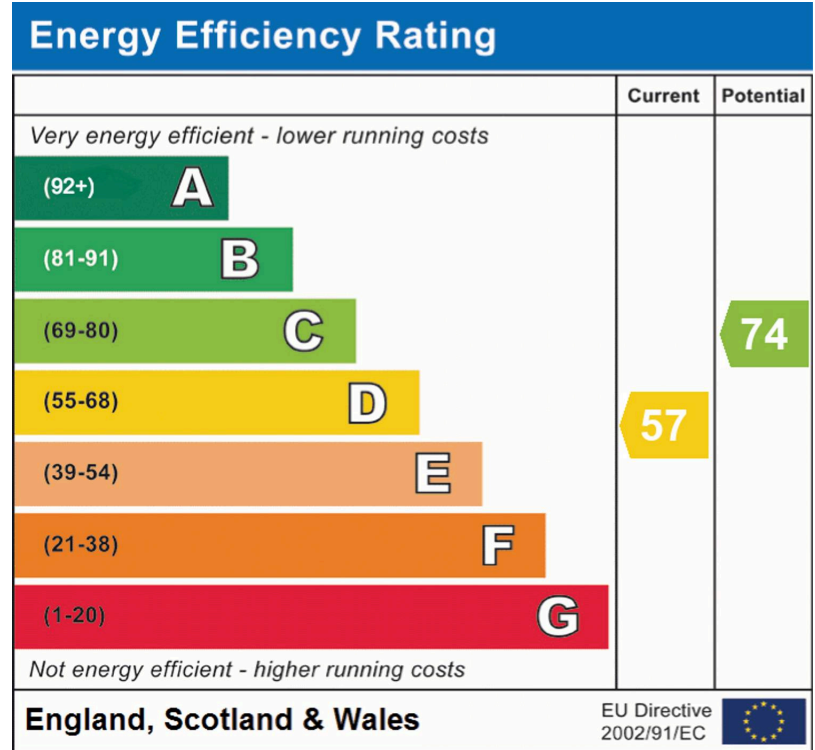
- Chain-free
- Large Shared Garden
- Long lease
- Ideal renovation project
- Excellent transport links nearby
- Gas central heating



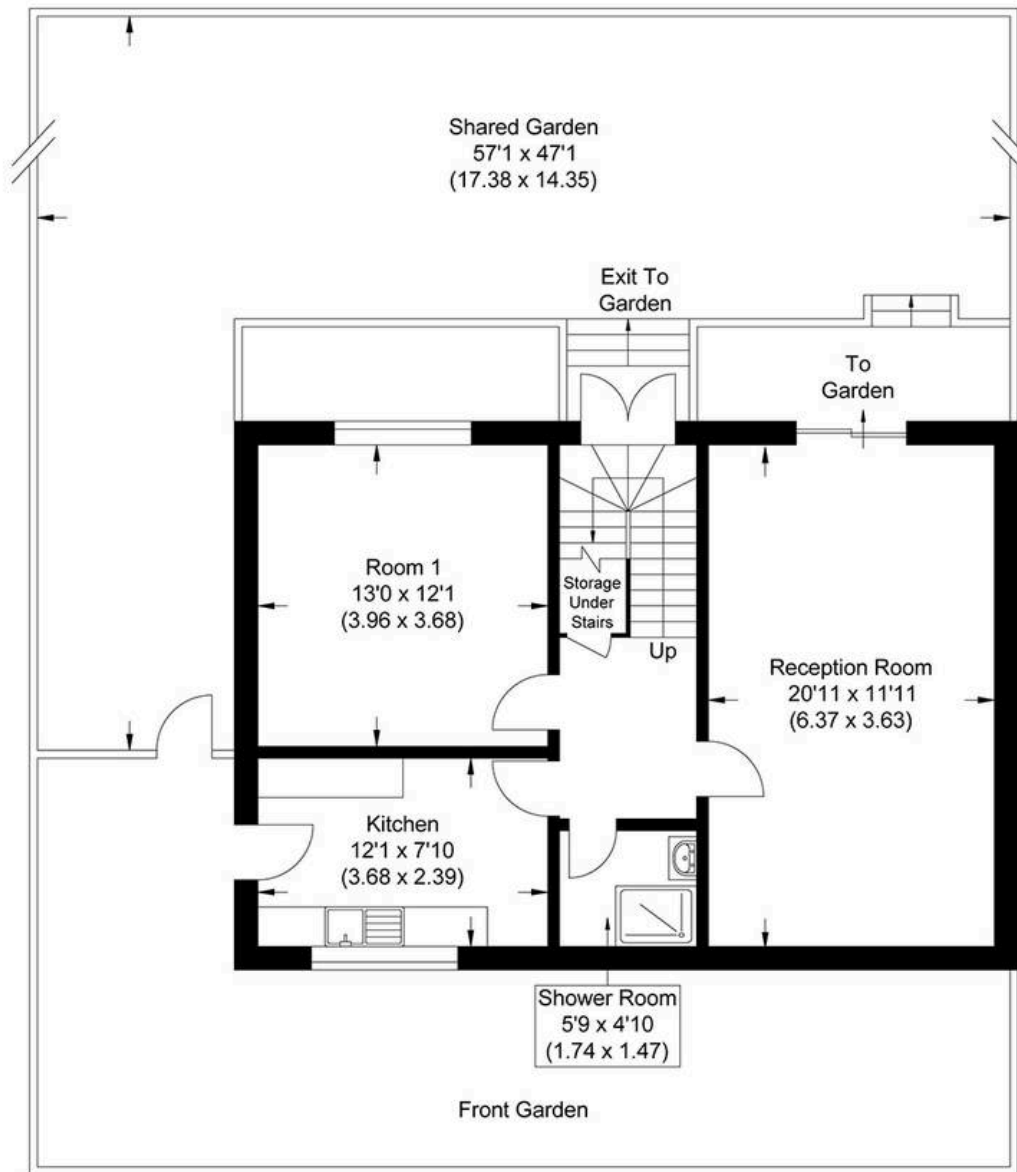




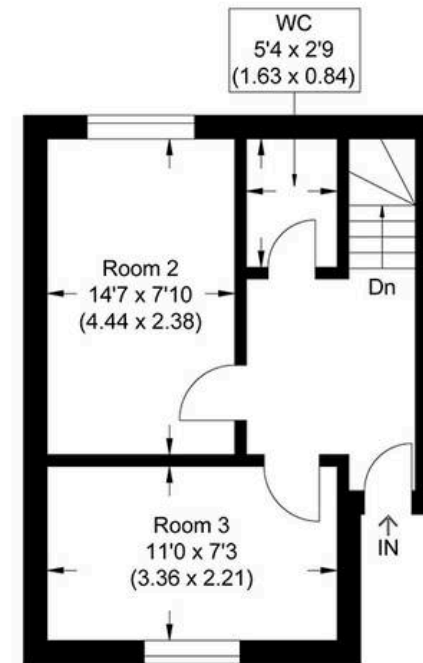




Approximate Gross Internal Area
87.45 sq m / 941.30 sq ft



Lower Ground Floor



Ground Floor

Illustration for identification purposes only, measurements are approximate, not to scale.



MA-Residential

1st Floor Romer House, 132 Lewisham High Street, London - SE13 6EE

020 8264 4464

hello@ma-residential.com

ma-residential.com/