



Flat A-B, 24 Crescent Road, London

London

£190,000

Flat A-B

24 Crescent Road, London

Chain-free one-bedroom ground-floor flat with large private garden and scope to refurbish. Close to Woolwich town centre, stations, shops and eateries. Ideal for first-time buyers or investors.

Council Tax band: B

Tenure: Leasehold

EPC Energy Efficiency Rating: D

EPC Environmental Impact Rating:

- One-bedroom Ground Floor Flat
- Private Rear Garden
- Chain-free Sale
- Ideal Renovation Project
- Excellent Transport Links Nearby
- Gas Central Heating










Energy Efficiency Rating

	Current	Potential
<i>Very energy efficient - lower running costs</i>		
(92+) A		
(81-91) B		
(69-80) C		73
(55-68) D	66	
(39-54) E		
(21-38) F		
(1-20) G		
<i>Not energy efficient - higher running costs</i>		
England, Scotland & Wales	EU Directive 2002/91/EC 	

Approximate Gross Internal Area
41.52 sq m / 446.91 sq ft

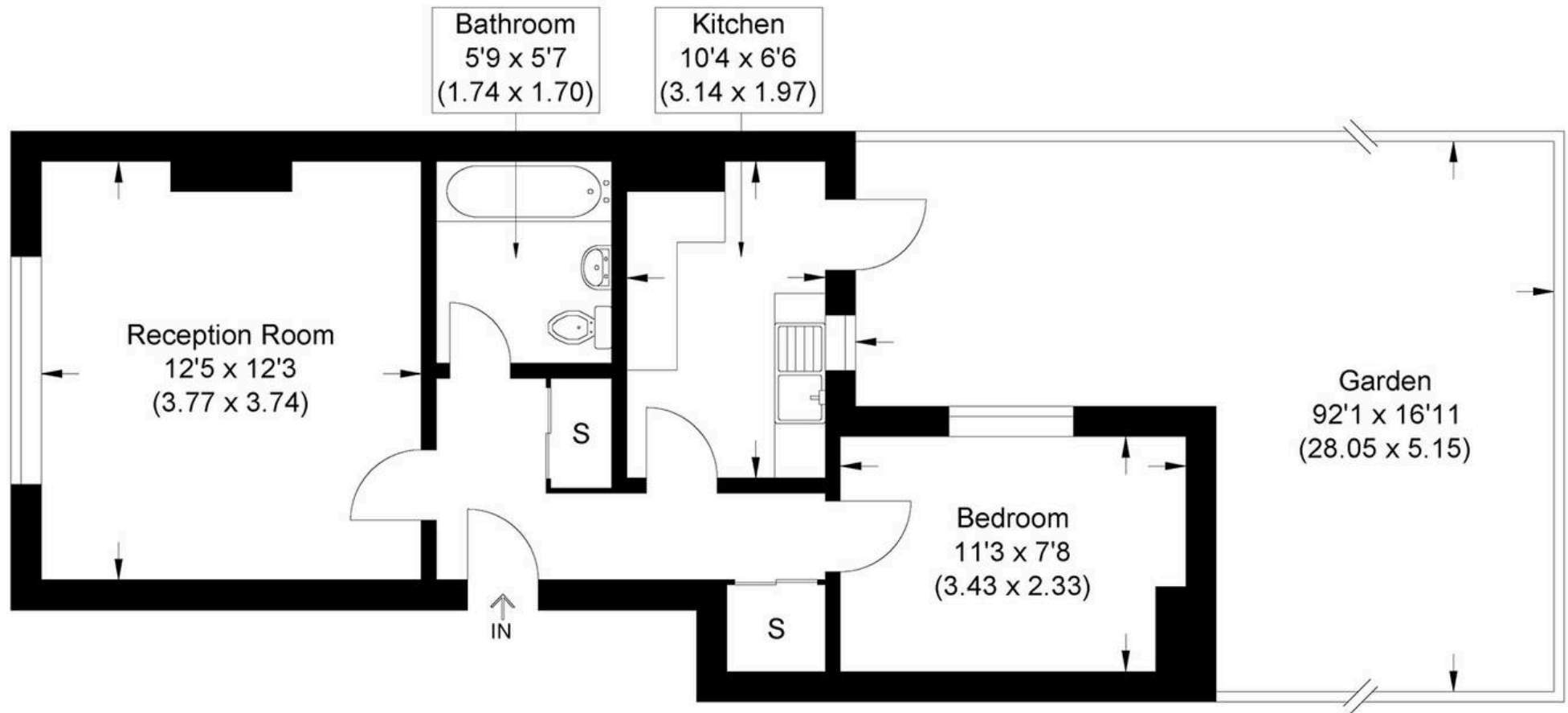


Illustration for identification purposes only, measurements are approximate, not to scale.



MA-Residential

1st Floor Romer House, 132 Lewisham High Street, London - SE13 6EE

020 8264 4464

hello@ma-residential.com

ma-residential.com/