



13b Mosslea Road, London

London

£240,000

13b Mosslea Road

London

Chain-free one-bed period flat in central Penge with bay-windowed lounge, separate kitchen, long lease, and scope to refurbish. Close to stations and Crystal Palace Park. Early viewing advised.

Council Tax band: B

Tenure: Leasehold

EPC Energy Efficiency Rating: C

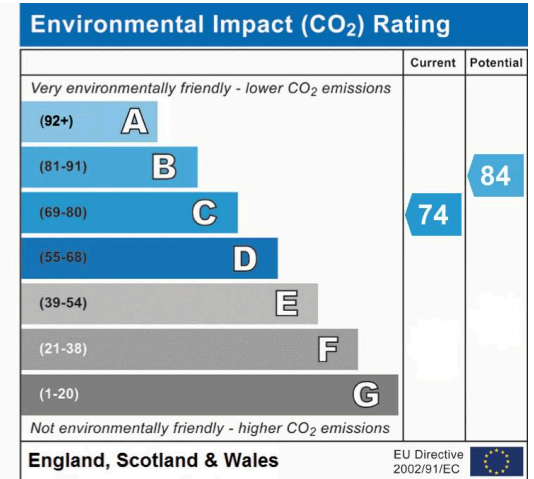
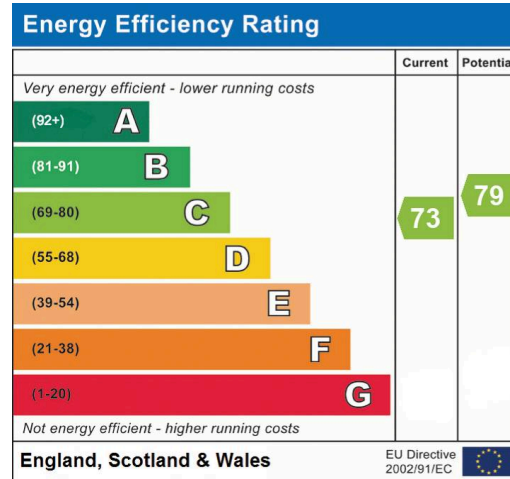
EPC Environmental Impact Rating: C

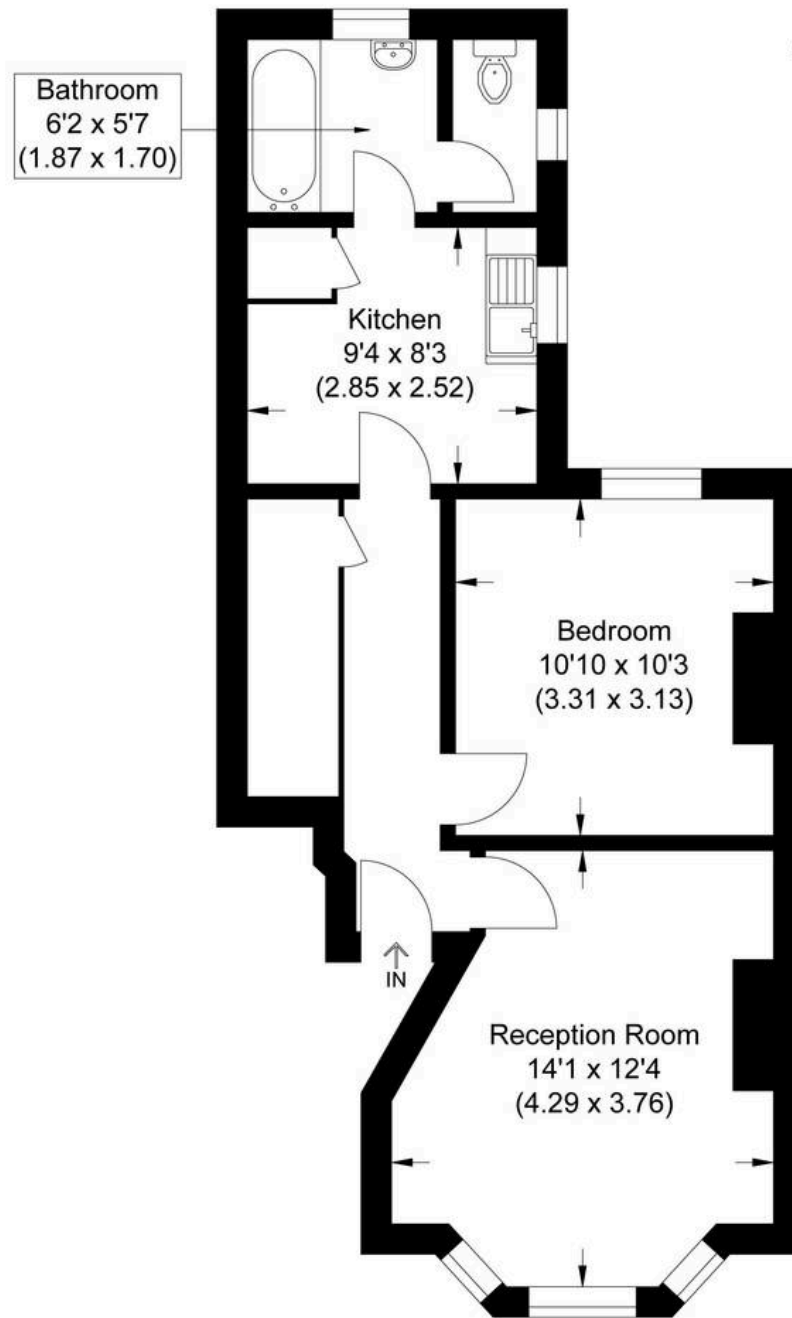
- Chain-free
- Filled with natural light
- Long lease
- Requires refurbishment - ideal project
- Excellent transport links nearby
- Gas central heating









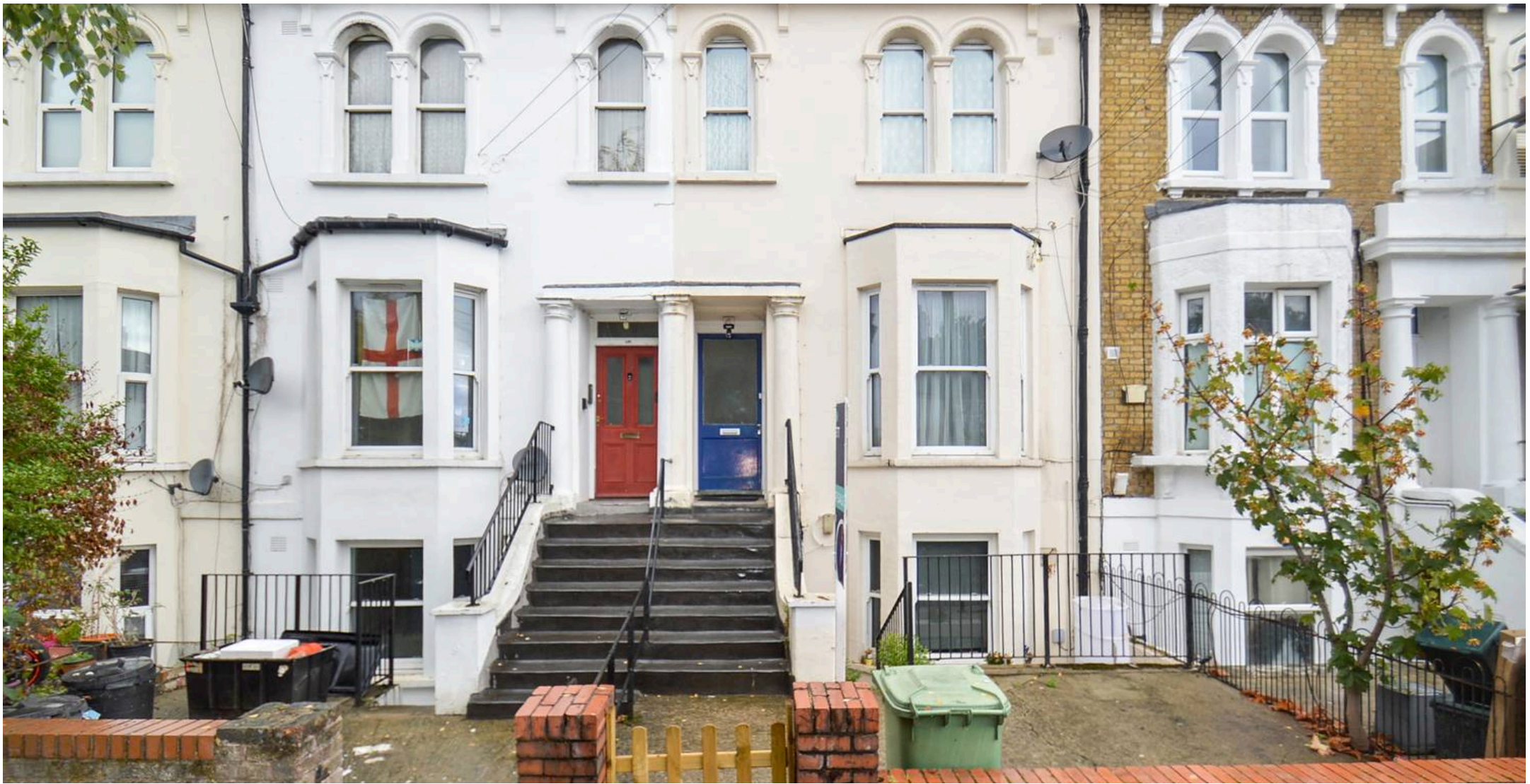


Approximate Gross Internal Area
45.0 sq m / 484.37 sq ft



Raised Ground Floor

Illustration for identification purposes only, measurements are approximate, not to scale.



MA-Residential

1st Floor Romer House, 132 Lewisham High Street, London - SE13 6EE

020 8264 4464

hello@ma-residential.com

ma-residential.com/