



11c Blythe Hill, London

London

£175,000

11c Blythe Hill

London

Spacious top-floor studio in period building on Blythe Hill. Chain free, long lease, needs modernisation. Close to stations, cafés and green spaces. Great potential in sought-after location.

Council Tax band: B

Tenure: Leasehold

EPC Energy Efficiency Rating: C

EPC Environmental Impact Rating: C

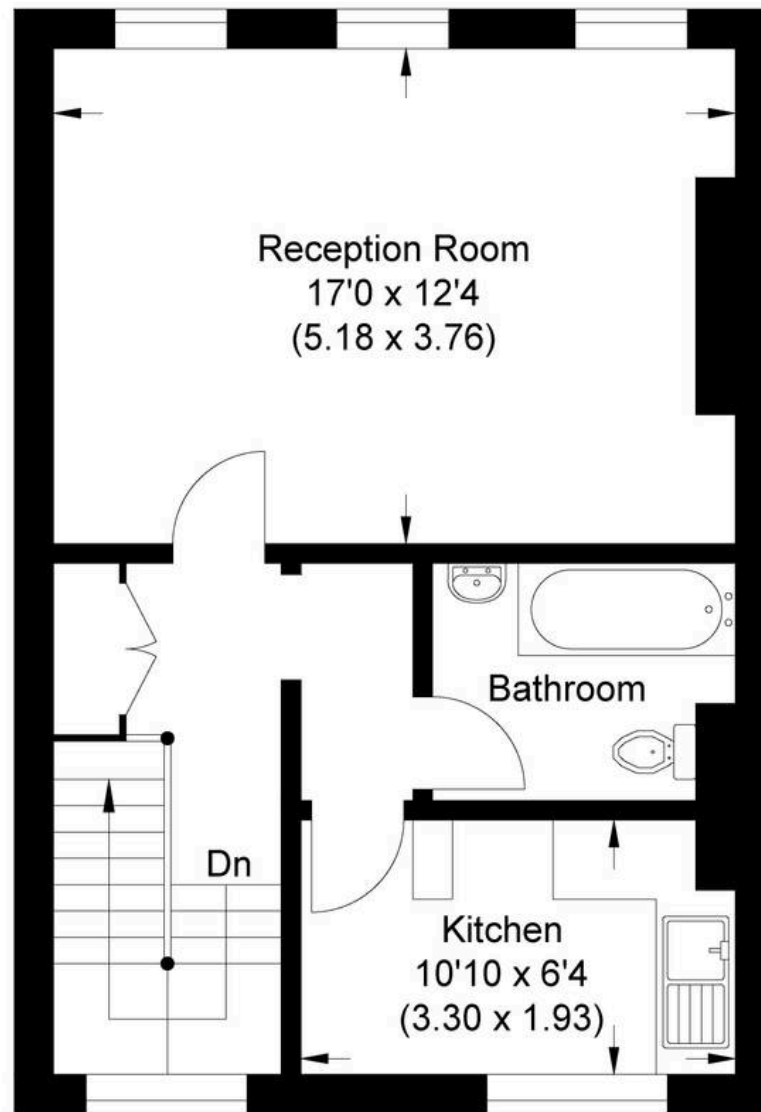
- Chain-free top-floor flat
- Long lease
- Excellent transport links and local amenities
- Gas central heating
- Filled with natural light
- Requires refurbishment - ideal project







Approximate Gross Internal Area
40.20 sq m / 432.70 sq ft



Second Floor

Illustration for identification purposes only, measurements are approximate, not to scale.



MA-Residential

1st Floor Romer House, 132 Lewisham High Street, London - SE13 6EE

020 8264 4464

hello@ma-residential.com

ma-residential.com/