



115b, 115 Hither Green Lane

London

£325,000

## 115b

115 Hither Green Lane, London

Spacious first-floor two-bed flat on Hither Green Lane with communal garden, two lofts, ideal for renovation. Close to stations, shops and parks. Great potential in a desirable SE13 location.

Council Tax band: B

Tenure: Leasehold

EPC Energy Efficiency Rating: C

EPC Environmental Impact Rating: C

- Chain-free top-floor flat
- Private rear garden
- Double Glazing
- Ideal renovation project
- Excellent transport links nearby
- Gas Central Heating

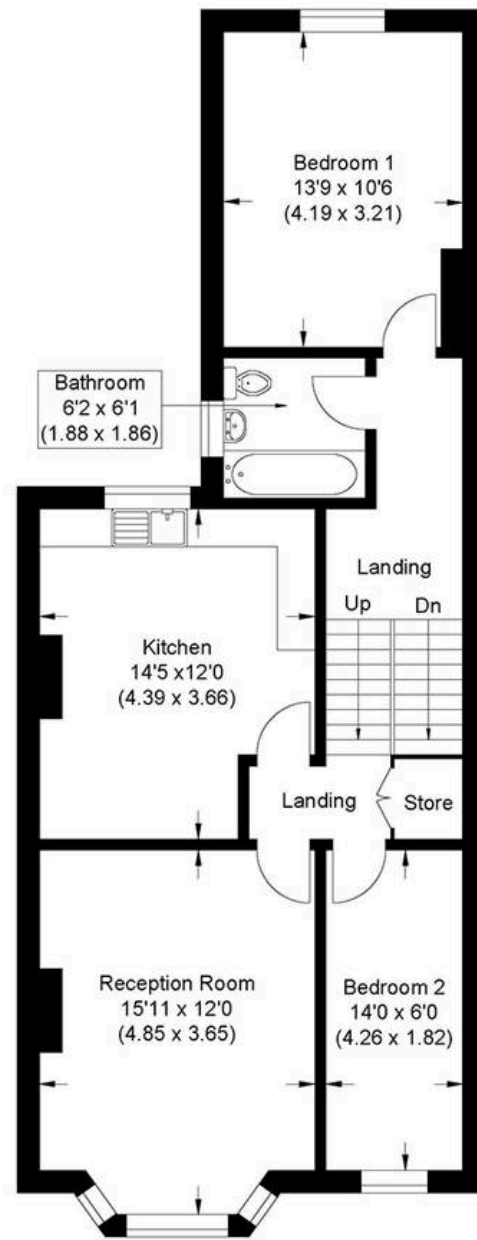








Approximate Gross Internal Area  
70.93 sq m / 763.48 sq ft



First Floor

Illustration for identification purposes only, measurements are approximate, not to scale.



## MA-Residential

1st Floor Romer House, 132 Lewisham High Street, London - SE13 6EE

020 8264 4464

[hello@ma-residential.com](mailto:hello@ma-residential.com)

[ma-residential.com/](https://ma-residential.com/)