



99 Elliscombe Road, London

London

£660,000

# 99 Elliscombe Road

London

Chain-free freehold house on Elliscombe Road, Charlton. Spacious, multi-floor layout with basement. Ideal for families or investors seeking a project. Close to amenities and transport.

Council Tax band: D

Tenure: Freehold

EPC Energy Efficiency Rating: C

EPC Environmental Impact Rating: D

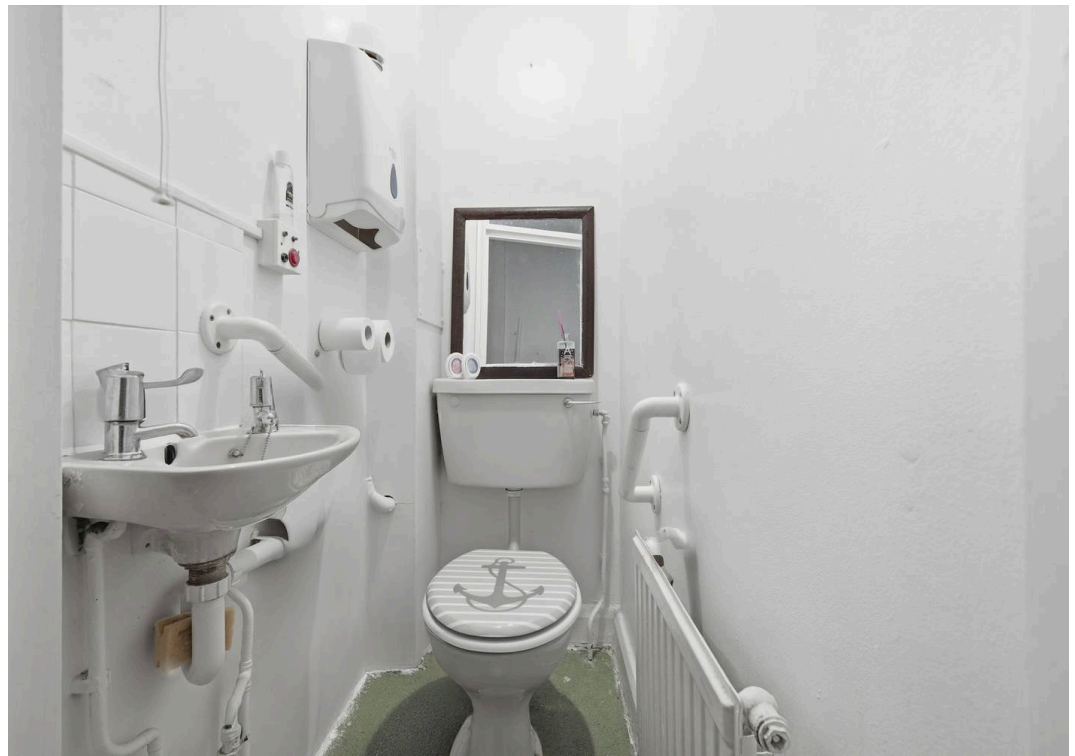
- Chain-free
- Large Garden
- High Ceilings
- Ideal renovation project
- Excellent transport links nearby
- Cellar











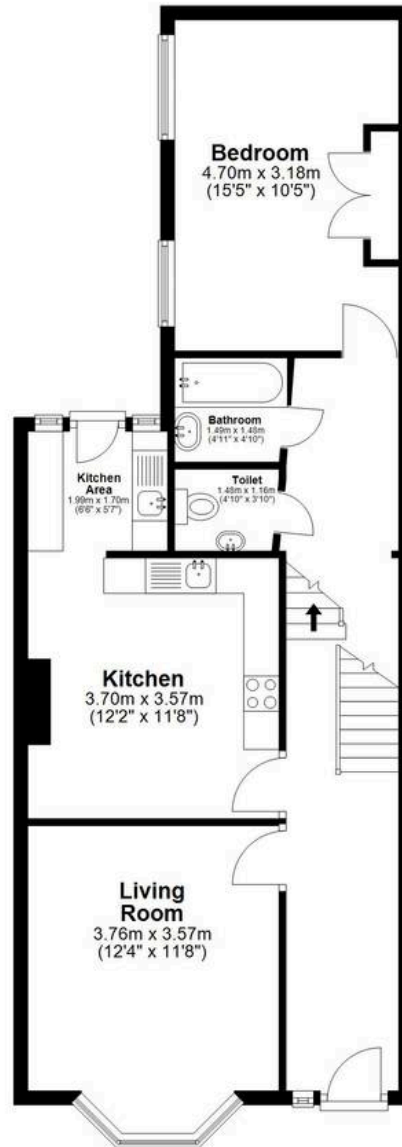






### Ground Floor

Approx. 68.2 sq. metres (734.5 sq. feet)



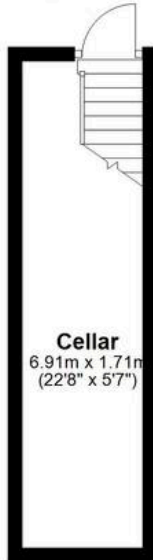
### First Floor

Approx. 66.9 sq. metres (720.4 sq. feet)



### Basement

Approx. 11.9 sq. metres (127.6 sq. feet)



Total area: approx. 147.0 sq. metres (1582.5 sq. feet)

All measurements have been taken as a guide to prospective buyers only and are not precise. This plan is for illustrative purposes only and no responsibility for any error, omission or misstatement. The services, systems and appliances shown have not been tested and no guarantee as to their operability or efficiency can be given. Measurements may have been taken from the widest area and may include wardrobe/cupboard space. No guarantee is given to any measurements including total areas. Buyers are advised to take their own measurements.



## MA-Residential

1st Floor Romer House, 132 Lewisham High Street, London - SE13 6EE

020 8264 4464

[hello@ma-residential.com](mailto:hello@ma-residential.com)

[ma-residential.com/](http://ma-residential.com/)