



Flat B, 27 Matham Grove, London

London

£550,000

Flat B

27 Matham Grove, London

Chain-free three-bedroom maisonette on two floors in SE22. Spacious layout, needs modernisation. Close to parks, shops, transport. Ideal project for buyers wanting to create their own home.

Council Tax band: D

Tenure: Leasehold

EPC Energy Efficiency Rating: C

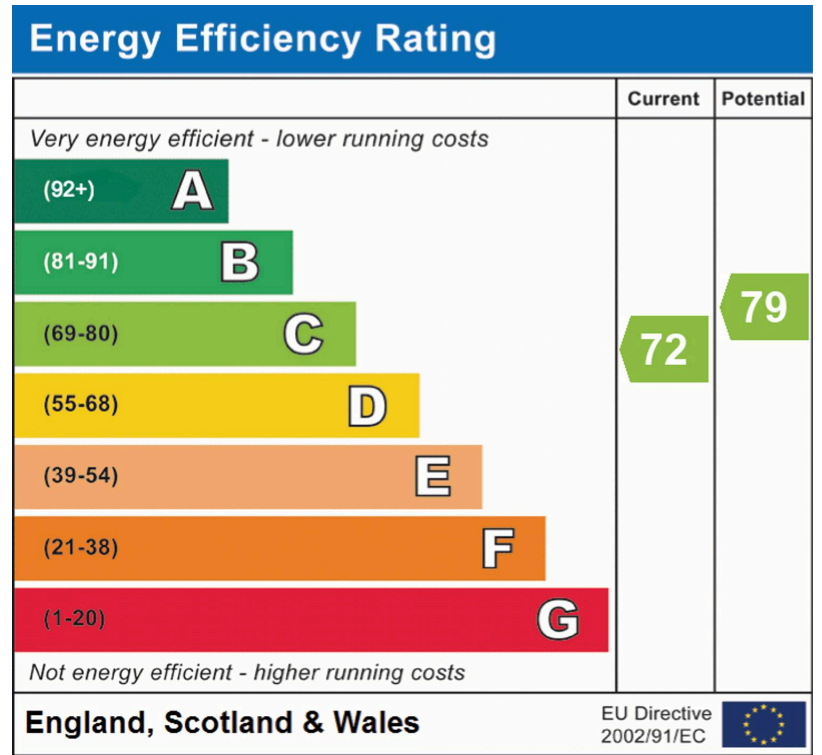
EPC Environmental Impact Rating:

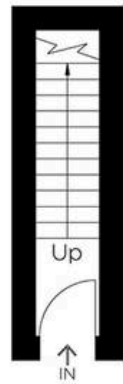
- Chain-free
- Incredible Location
- High Ceilings
- Ideal renovation project
- Excellent transport links nearby
- Gas central heating



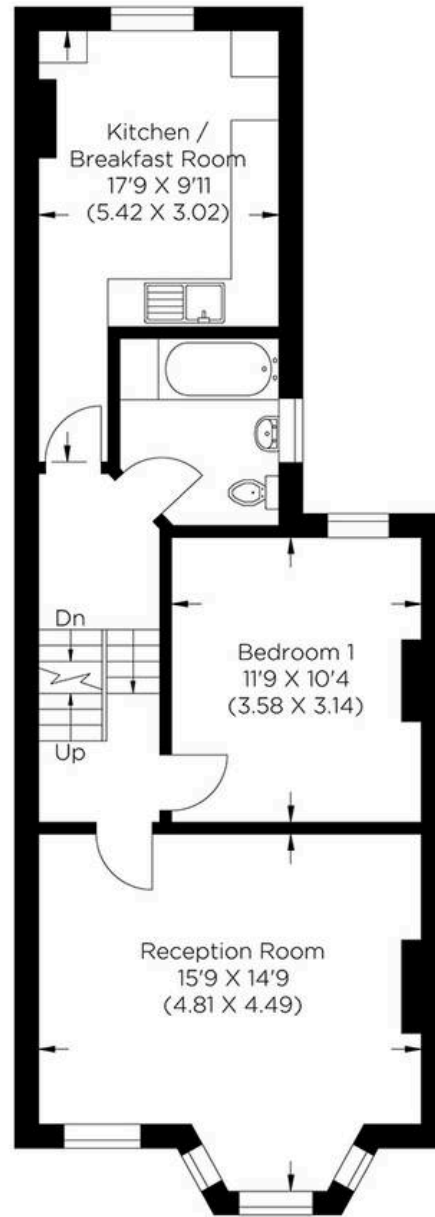




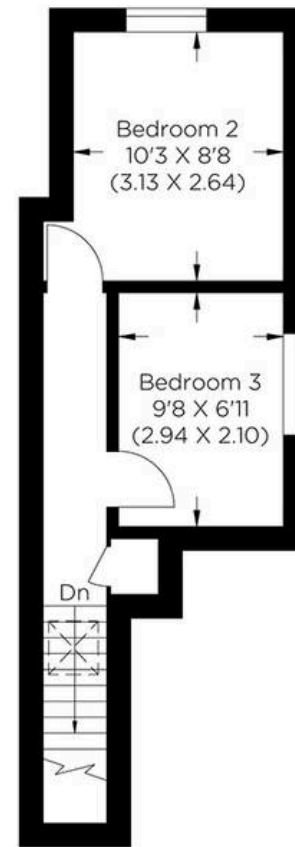




Ground Floor



First Floor



Second Floor

Approximate gross internal area
80.20 sq m / 863.26 sq ft



MA-Residential

1st Floor Romer House, 132 Lewisham High Street, London - SE13 6EE

020 8264 4464

hello@ma-residential.com

ma-residential.com/