



27 Conington Road, London

London

£615,000

27 Conington Road

London

Chain-free three-bedroom home with spacious layout, conservatory, private garden, and flexible living areas. Close to Lewisham Station, shops, and green spaces. Great potential. Early viewing advised.

Council Tax band: D

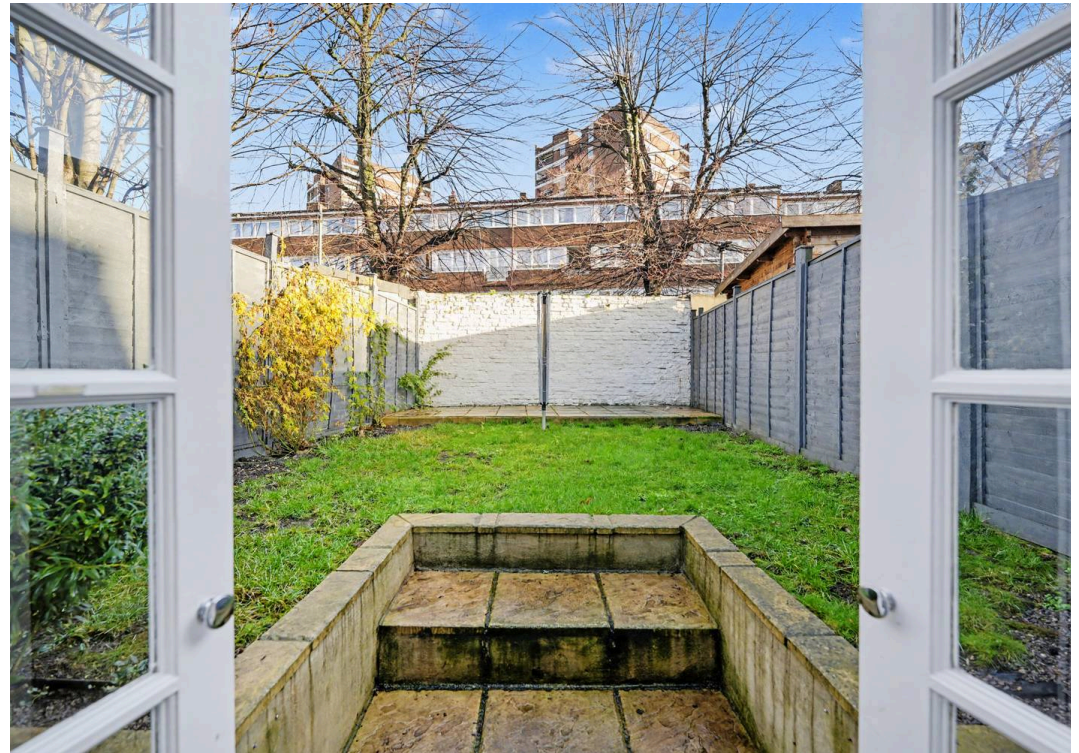
Tenure: Freehold

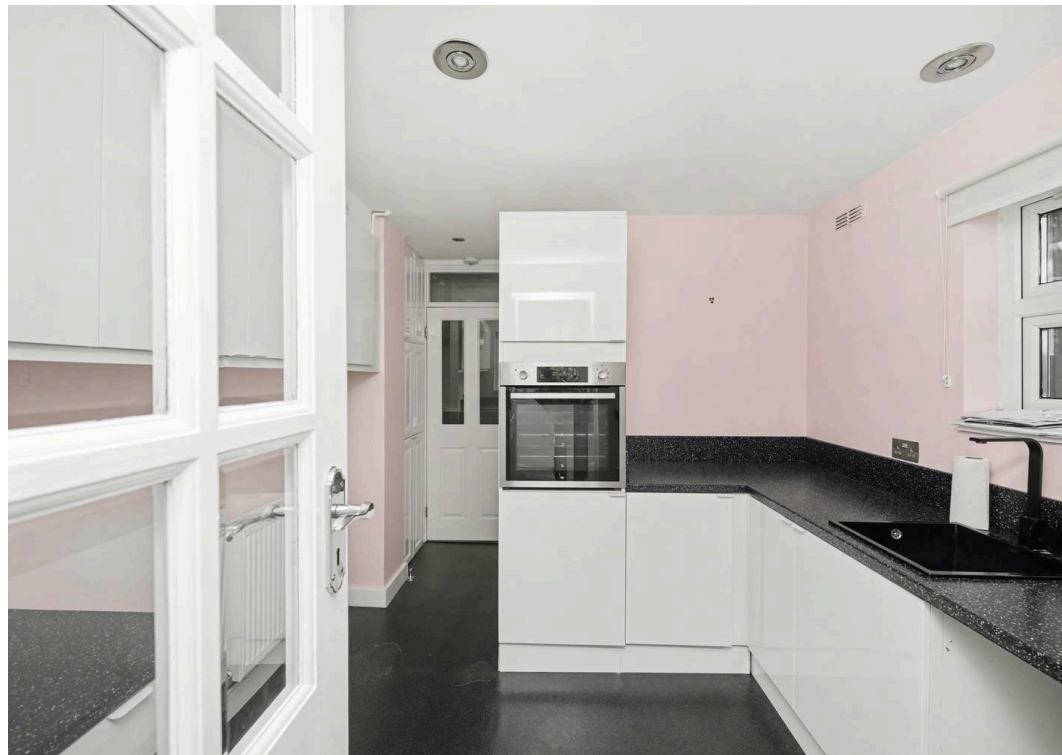
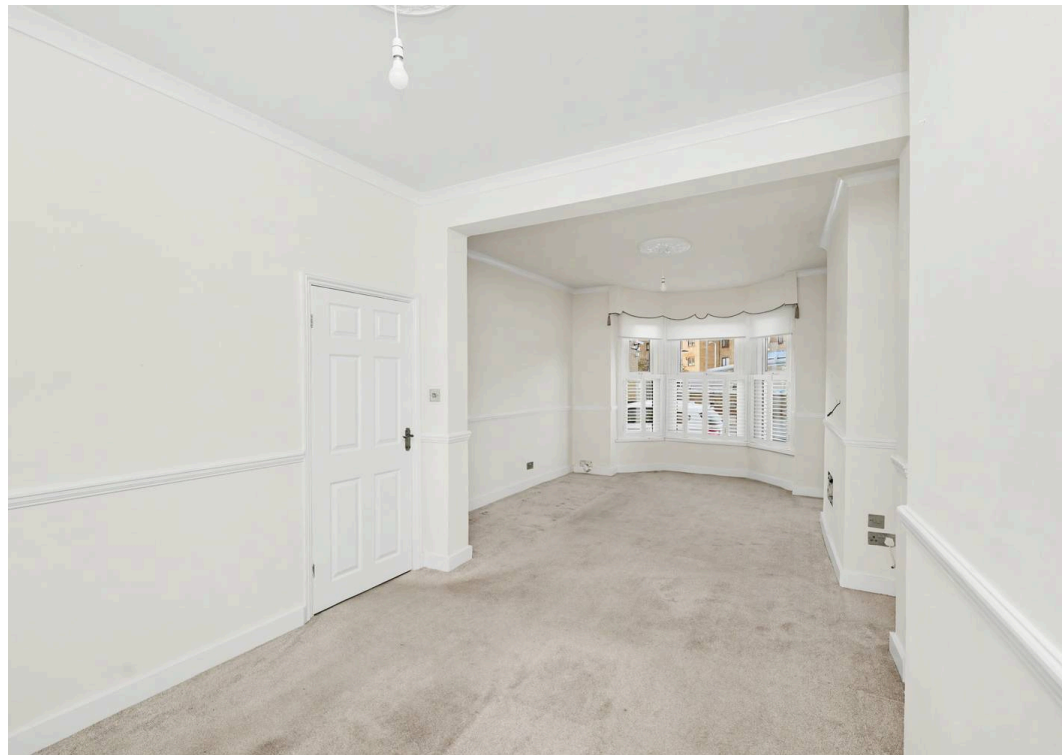
EPC Energy Efficiency Rating: D

EPC Environmental Impact Rating: D

- Chain-free
- Private rear garden
- High Ceilings
- Ideal renovation project
- Excellent transport links nearby
- Gas Central Heating

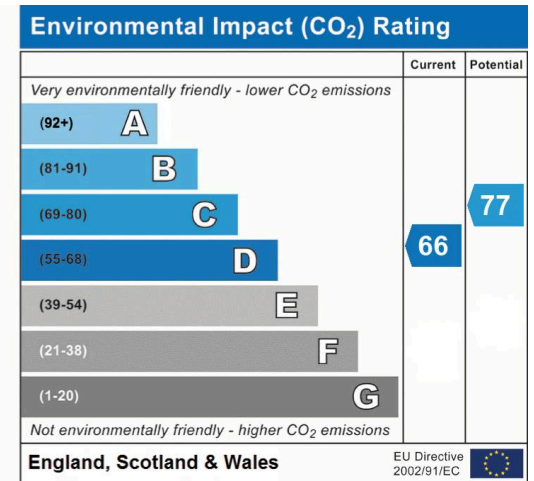
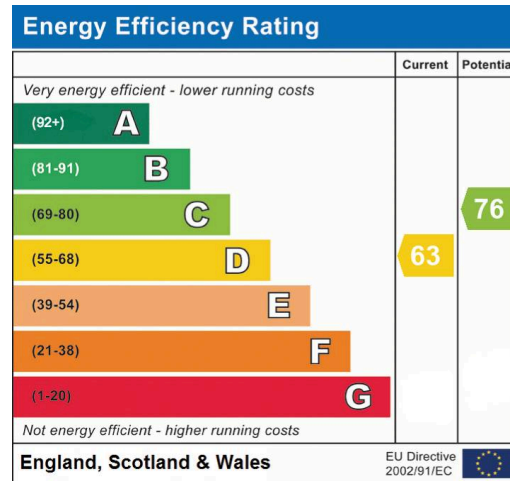
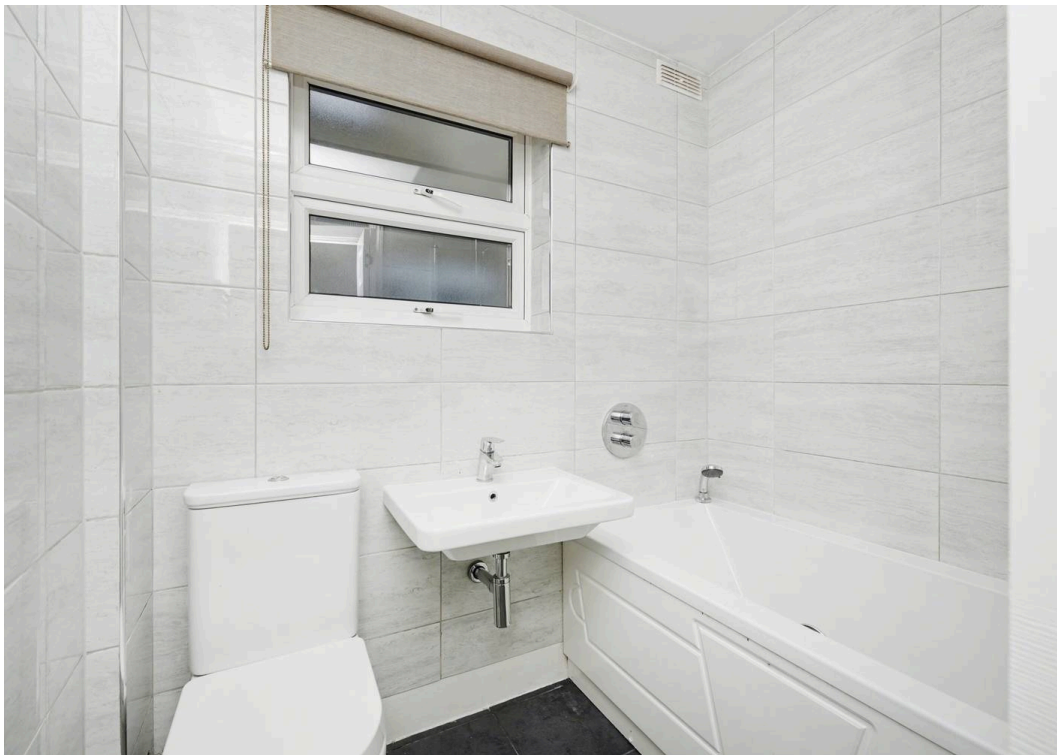


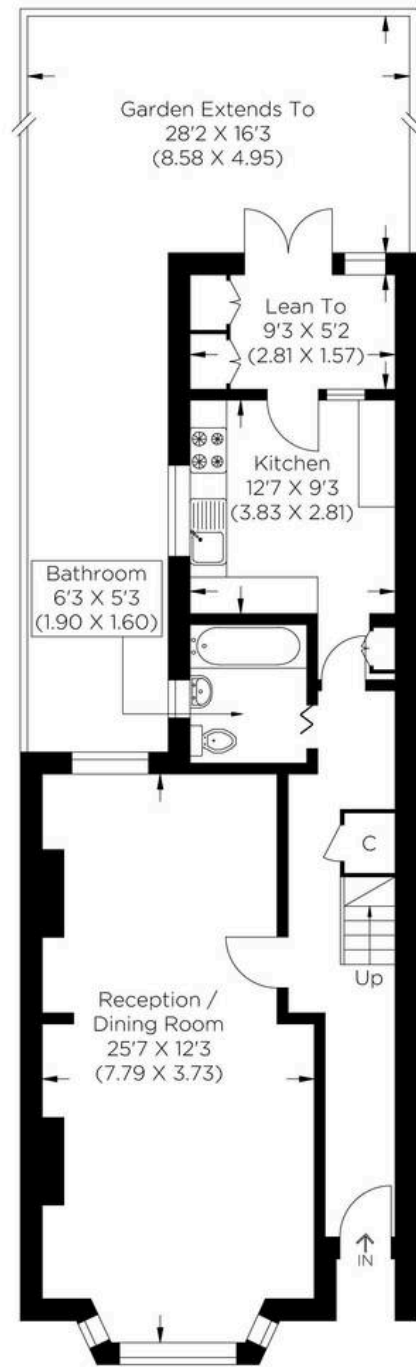




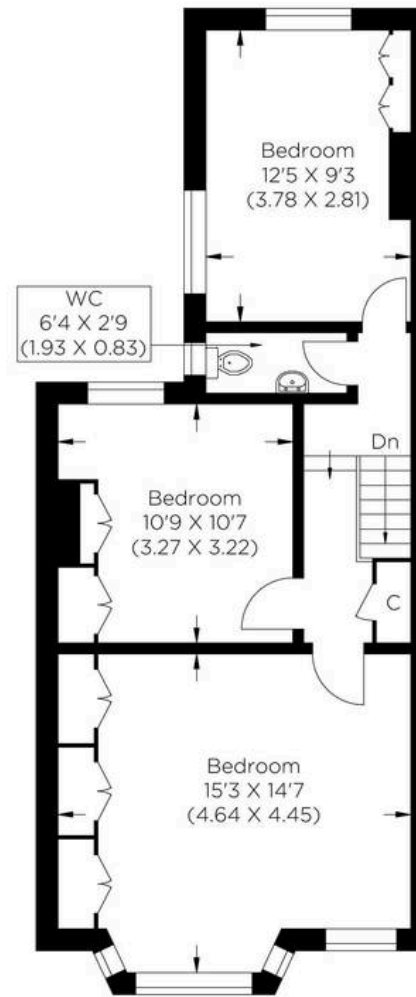








Ground Floor



First Floor

Approximate gross internal area
104.83 sq m / 1128.38 sq ft





MA-Residential

1st Floor Romer House, 132 Lewisham High Street, London - SE13 6EE

020 8264 4464

hello@ma-residential.com

ma-residential.com/