



170 Ravensworth Road, London

London

£375,000

170 Ravensworth Road

London

Three-bedroom home on a quiet Mottingham road with spacious rooms, large rear garden, private patio, and scope to add value. Close to local amenities, green spaces, and transport links.

Council Tax band: C

Tenure: Freehold

EPC Energy Efficiency Rating: D

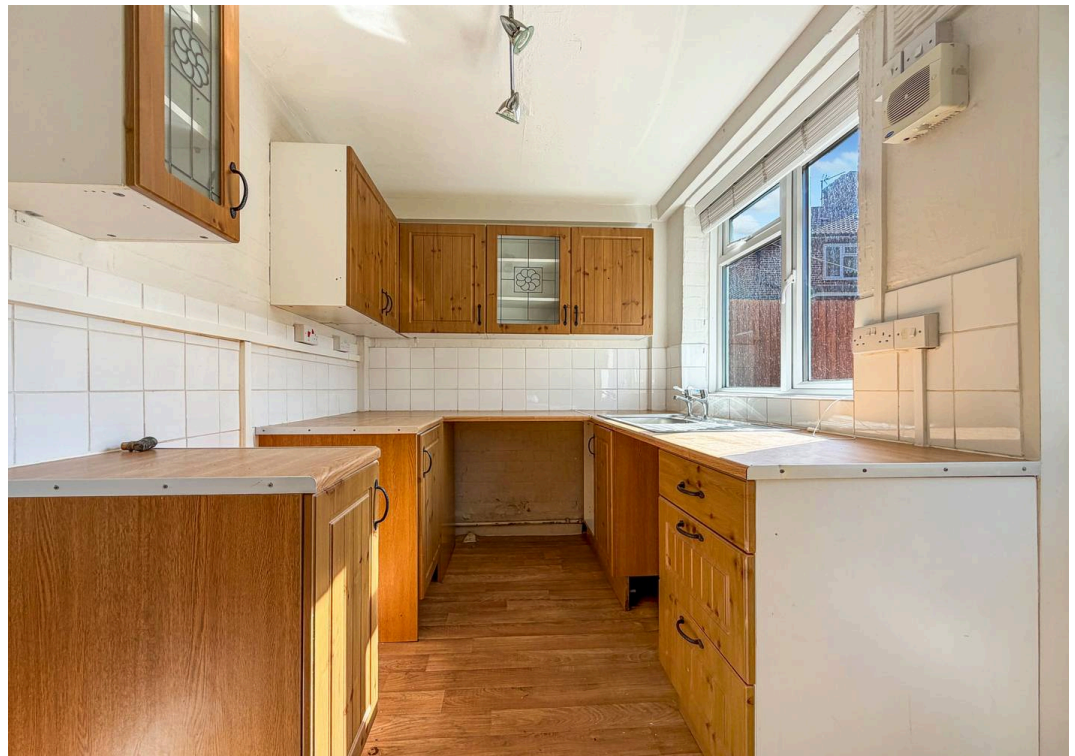
EPC Environmental Impact Rating: D

- Chain-free
- Private rear garden
- Shed
- Ideal renovation project
- Excellent transport links nearby
- Gas central heating

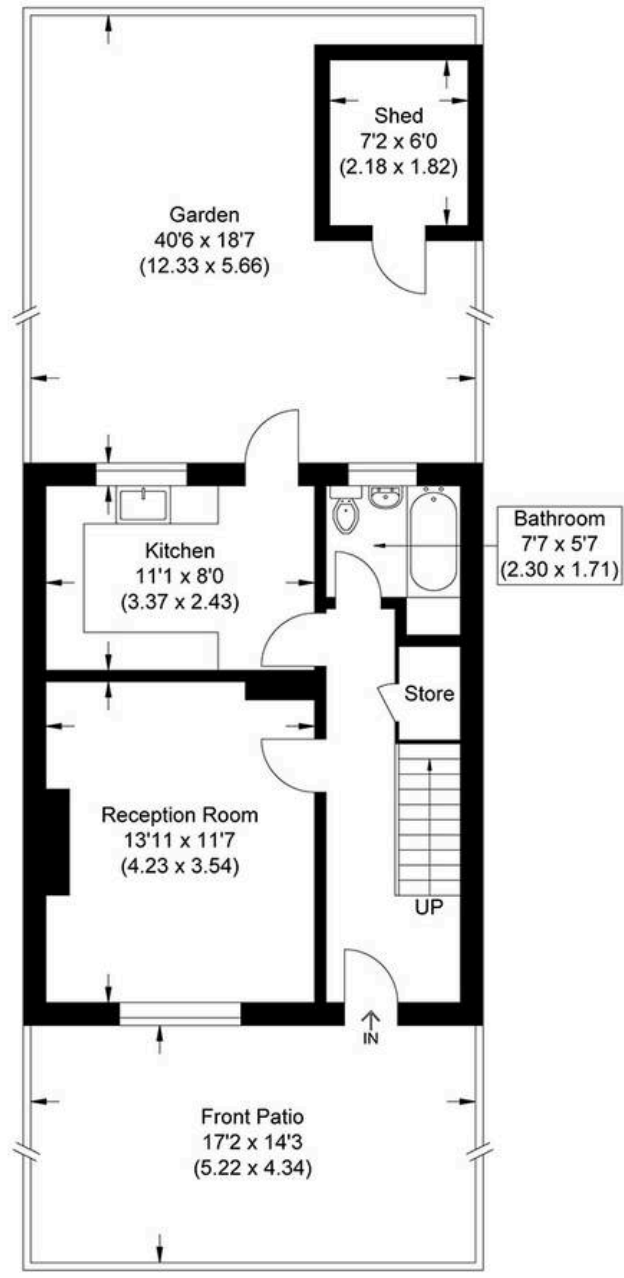




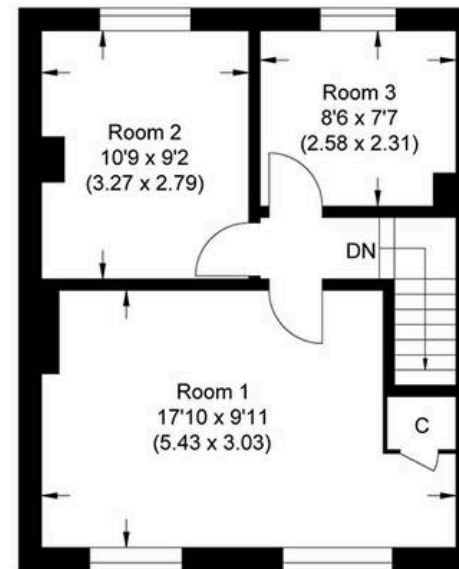








Ground Floor



First Floor

Approximate Gross Internal Area
 74.37 sq m / 800.51 sq ft
 (Excludes Shed)
 Shed Area 3.97 sq m / 42.73 sq ft

Illustration for identification purposes only, measurements are approximate, not to scale.



MA-Residential

1st Floor Romer House, 132 Lewisham High Street, London - SE13 6EE

020 8264 4464

hello@ma-residential.com

ma-residential.com/