



Flat A, 154 Parish Lane, London

London

£230,000

# Flat A

154 Parish Lane, London

Chain-free ground floor one-bed flat (447 sq ft) needing modernisation, with private garden and new lease. Close to stations and amenities. Great potential for buyers or investors.

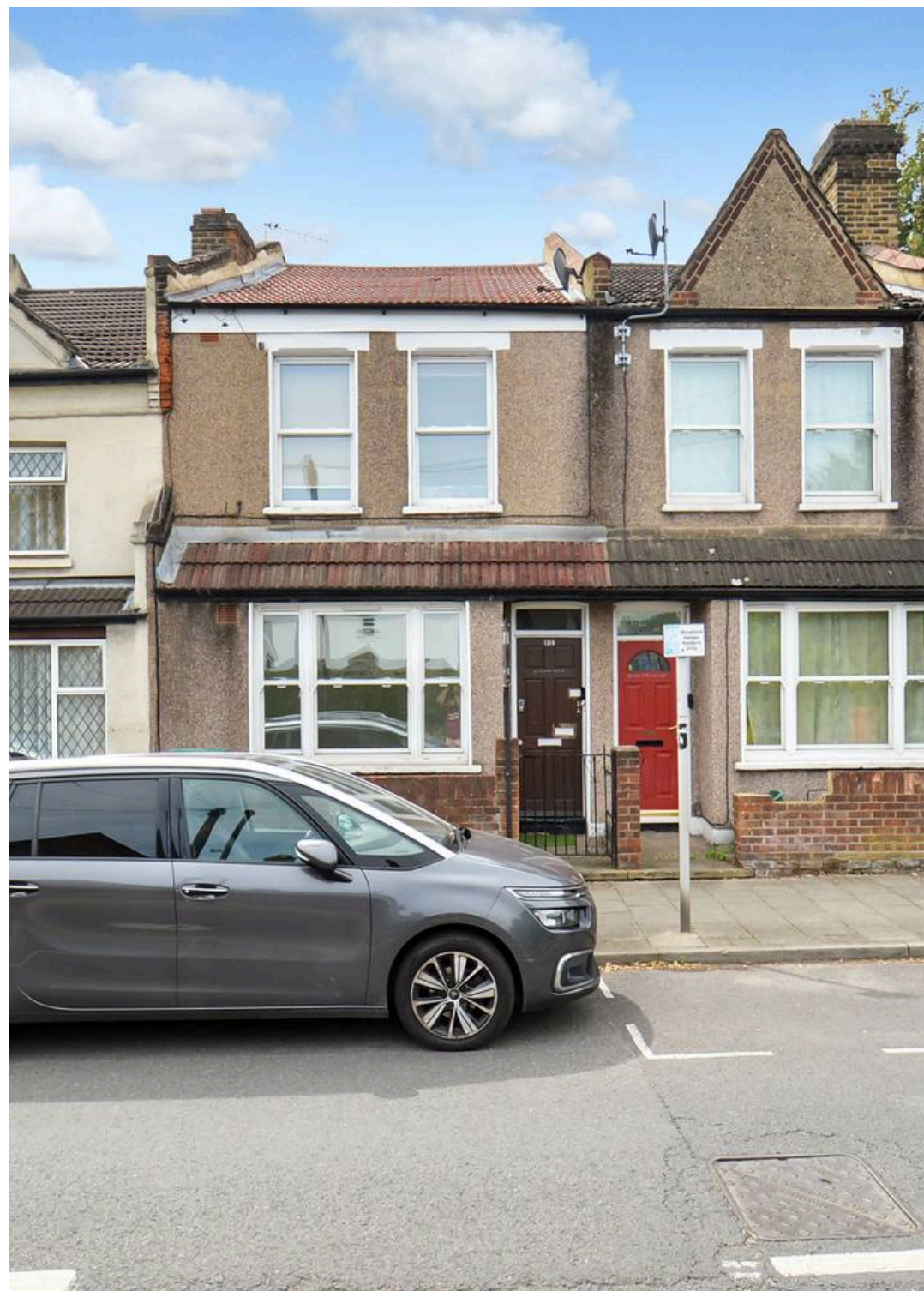
Council Tax band: C

Tenure: Leasehold

EPC Energy Efficiency Rating: C

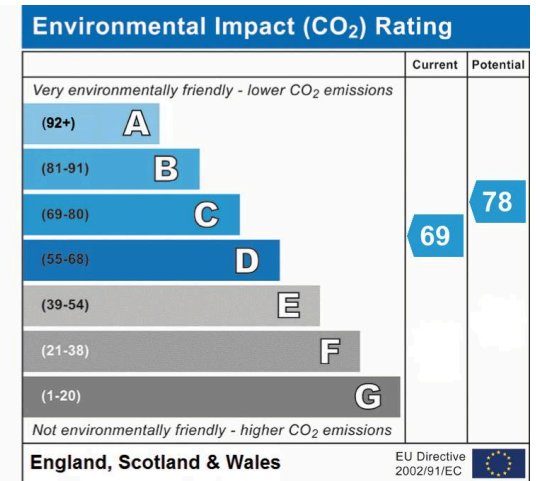
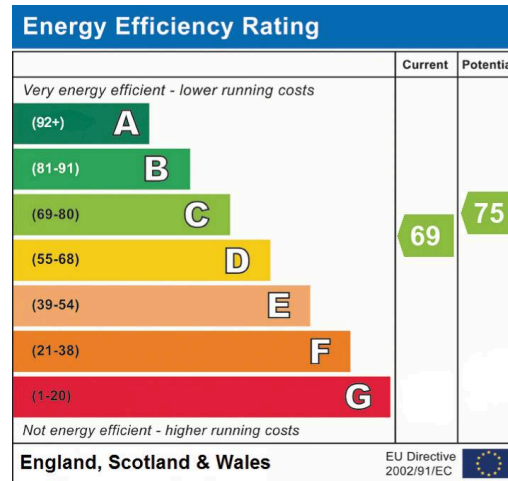
EPC Environmental Impact Rating: C

- Chain-free
- Private Garden
- New Lease
- Ideal renovation project
- Excellent transport links nearby
- Gas Central Heating

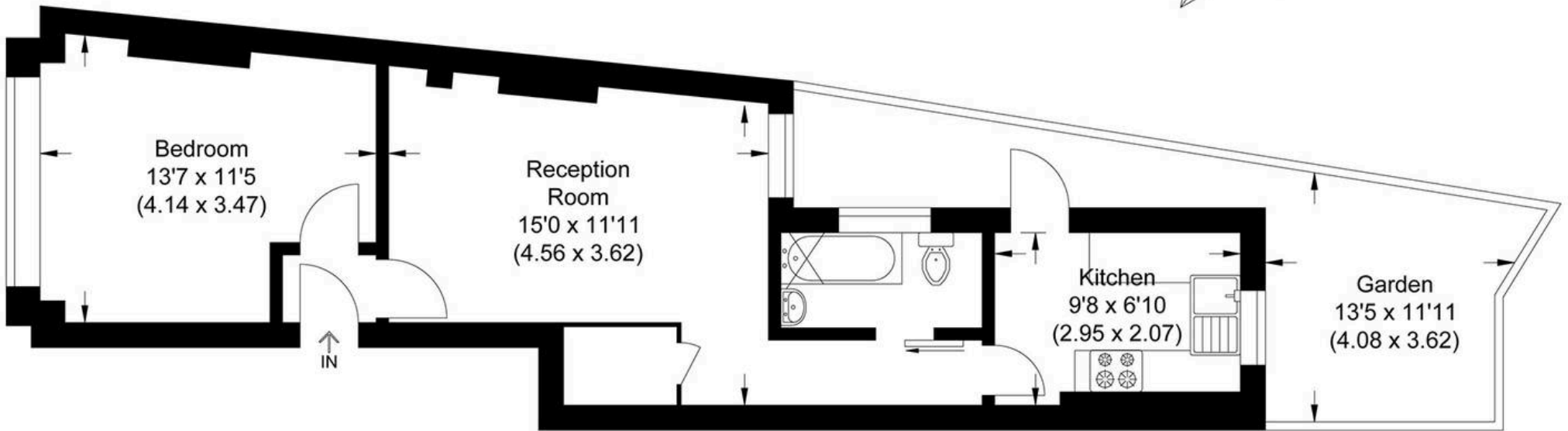






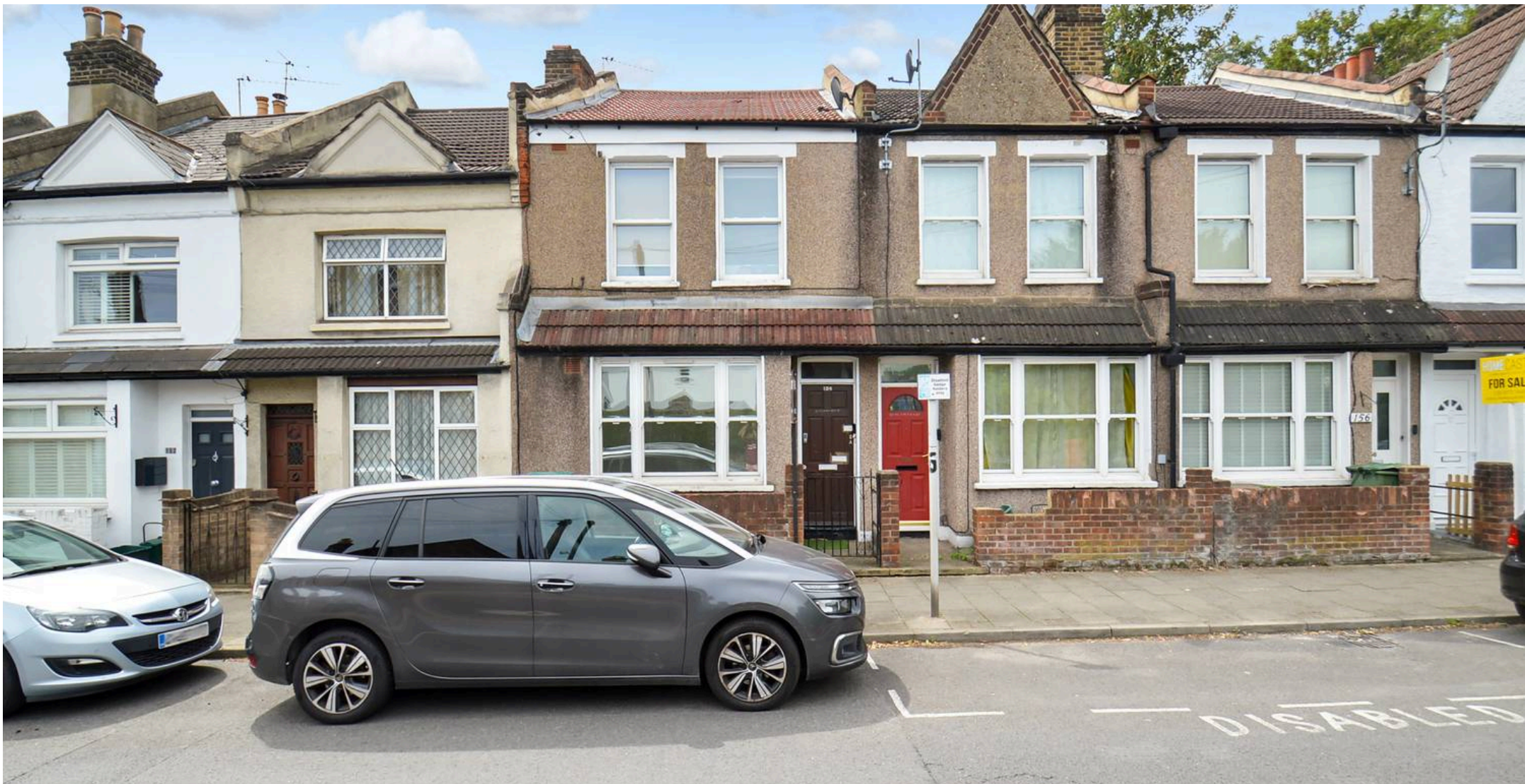


Approximate Gross Internal Area  
41.50 sq m / 446.70 sq ft



## Ground Floor

Illustration for identification purposes only, measurements are approximate, not to scale.



## MA-Residential

1st Floor Romer House, 132 Lewisham High Street, London - SE13 6EE

020 8264 4464

[hello@ma-residential.com](mailto:hello@ma-residential.com)

[ma-residential.com/](http://ma-residential.com/)