



83a Abbey Wood Road, London

London

£250,000

83a Abbey Wood Road

London

Spacious two-bed flat near Abbey Wood Station (Elizabeth Line), chain free, with new roof. Ideal for modernisation. Great transport links, parks and shops nearby. Excellent investment potential.

Council Tax band: B

Tenure: Leasehold

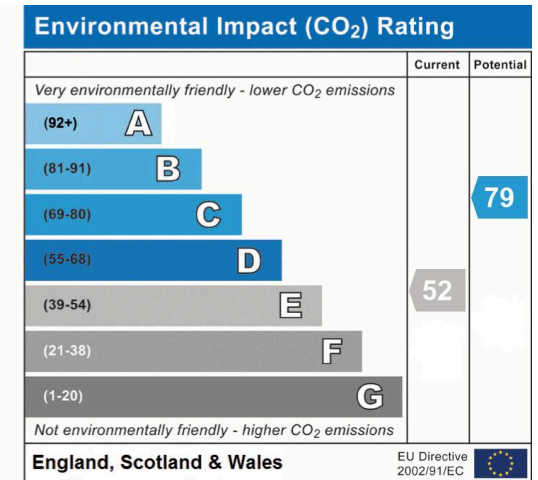
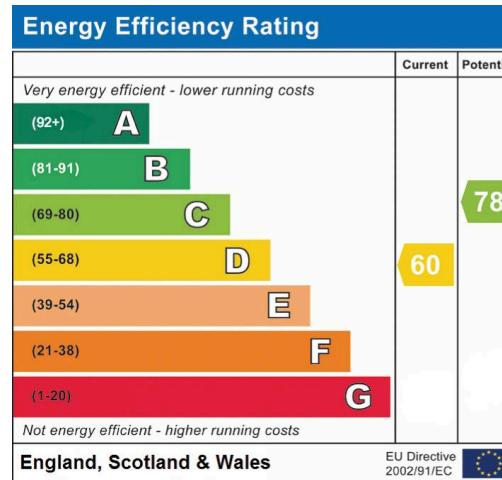
EPC Energy Efficiency Rating: D

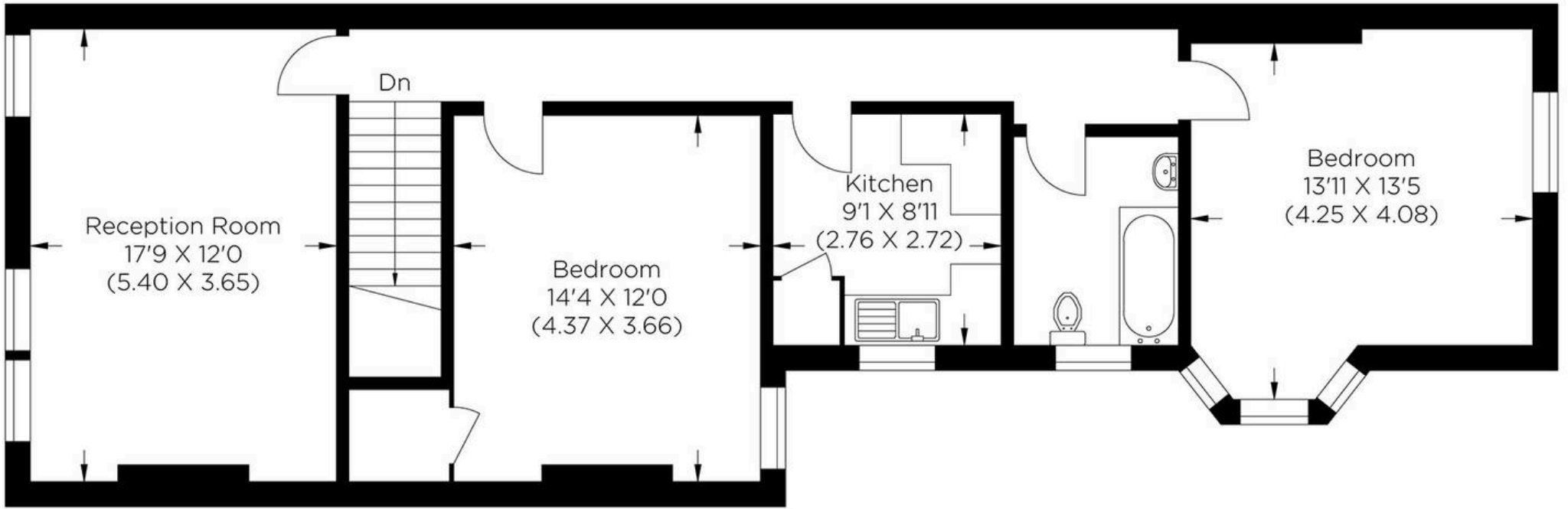
EPC Environmental Impact Rating: E

- Two-bedrooms top floor flat
- Own entrance
- Chain-free sale
- Ideal renovation project
- Excellent transport links nearby
- Gas Central Heating

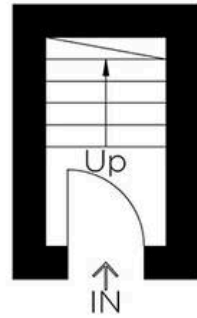








First Floor



Ground Floor

Approximate gross internal area
84.0 sq m / 904.16 sq ft



MA-Residential

1st Floor Romer House, 132 Lewisham High Street, London - SE13 6EE

020 8264 4464

hello@ma-residential.com

ma-residential.com/