



46 Crockham Way, London

London

£425,000

46 Crockham Way

London

Spacious end-terrace home in SE9 with large driveway, generous garden, scope to extend (STPP), flexible layout, near schools, parks, shops and rail links. Ideal for families seeking potential.

Council Tax band: D

Tenure: Freehold

EPC Energy Efficiency Rating: C

EPC Environmental Impact Rating: C

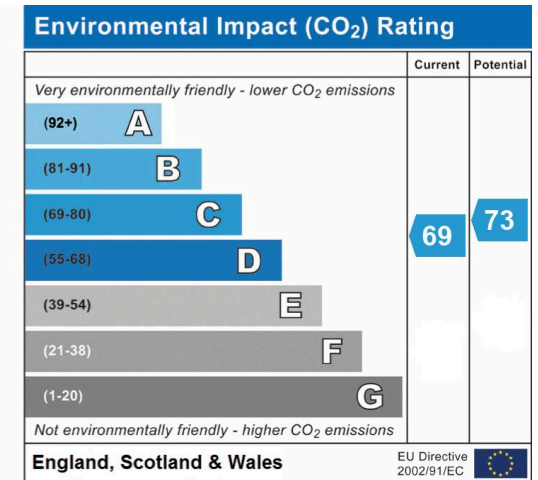
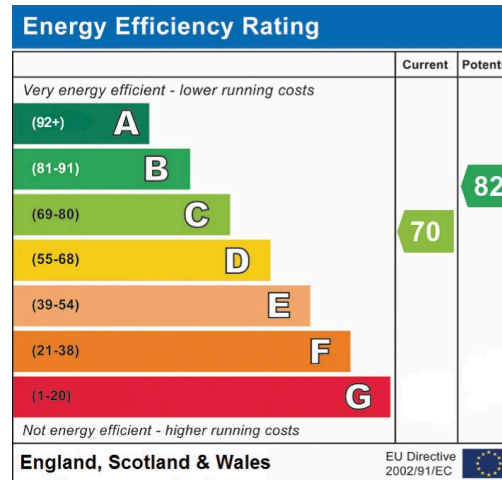
- Chain-free
- Large Garden
- Large Driveway
- Ideal renovation project
- Excellent transport links nearby
- Gas central heating



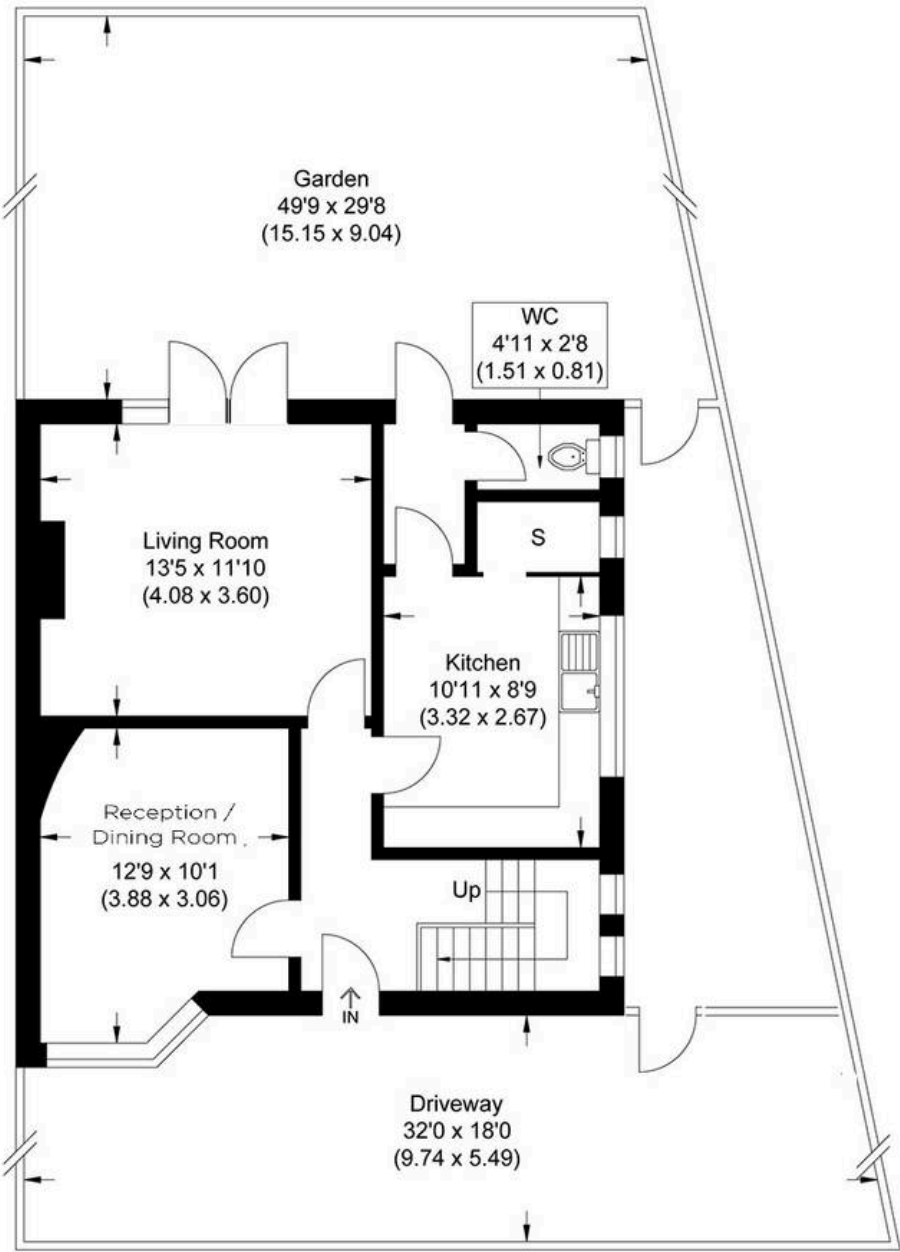




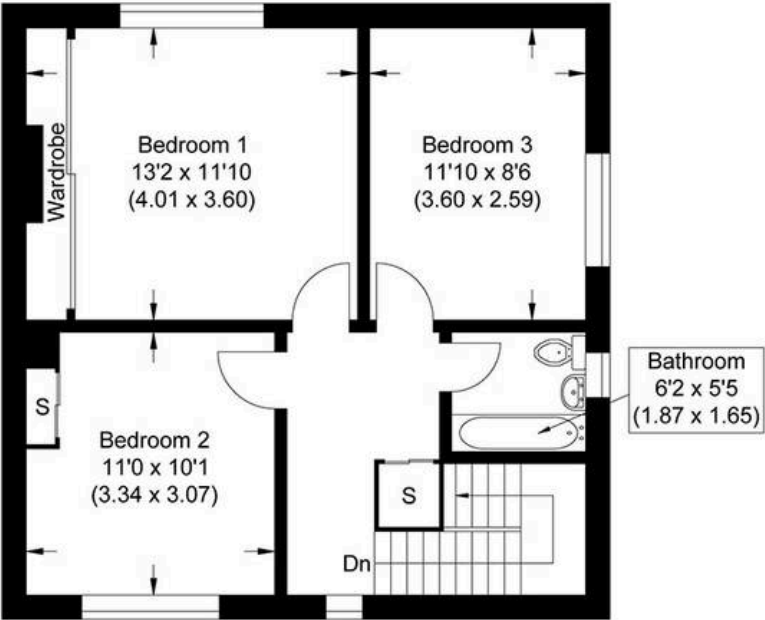




Approximate Gross Internal Area
97.37 sq m / 1048.08 sq ft



Ground Floor



First Floor

Illustration for identification purposes only, measurements are approximate, not to scale.



MA-Residential

1st Floor Romer House, 132 Lewisham High Street, London - SE13 6EE

020 8264 4464

hello@ma-residential.com

ma-residential.com/