



13a Mosslea Road, London

London

£230,000

# 13a Mosslea Road

London

Chain-free ground floor one-bed flat with private entrance and garden. Requires modernisation. Close to Penge High St, parks and stations. Ideal for buyers seeking a project.

Council Tax band: B

Tenure: Leasehold

EPC Energy Efficiency Rating: C

EPC Environmental Impact Rating: C

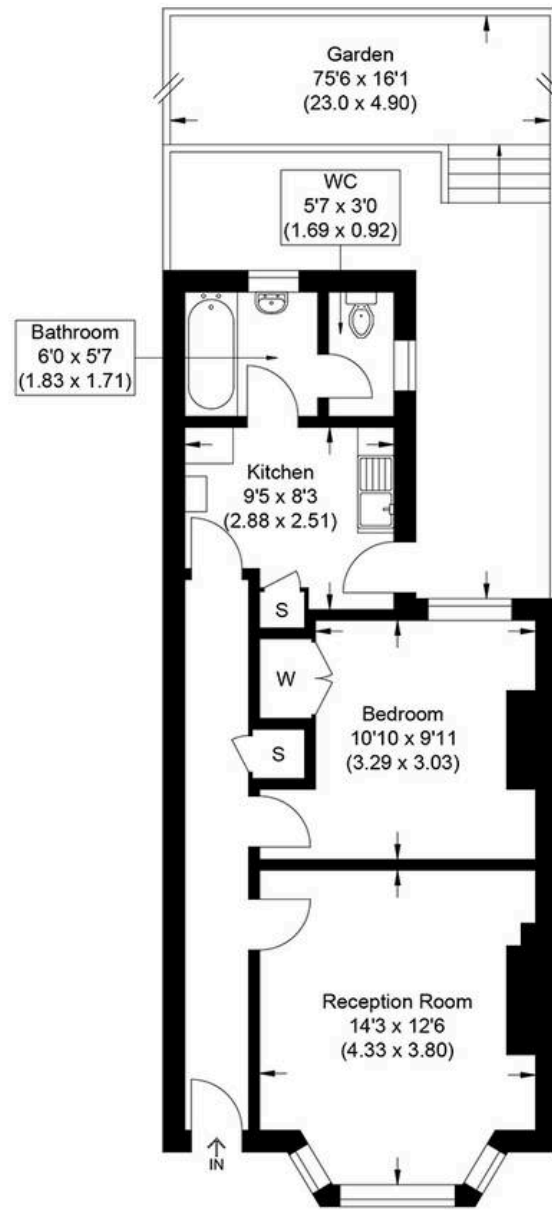
- Chain-free
- Private rear garden
- Long Lease
- Ideal renovation project
- Excellent transport links nearby
- Gas central heating







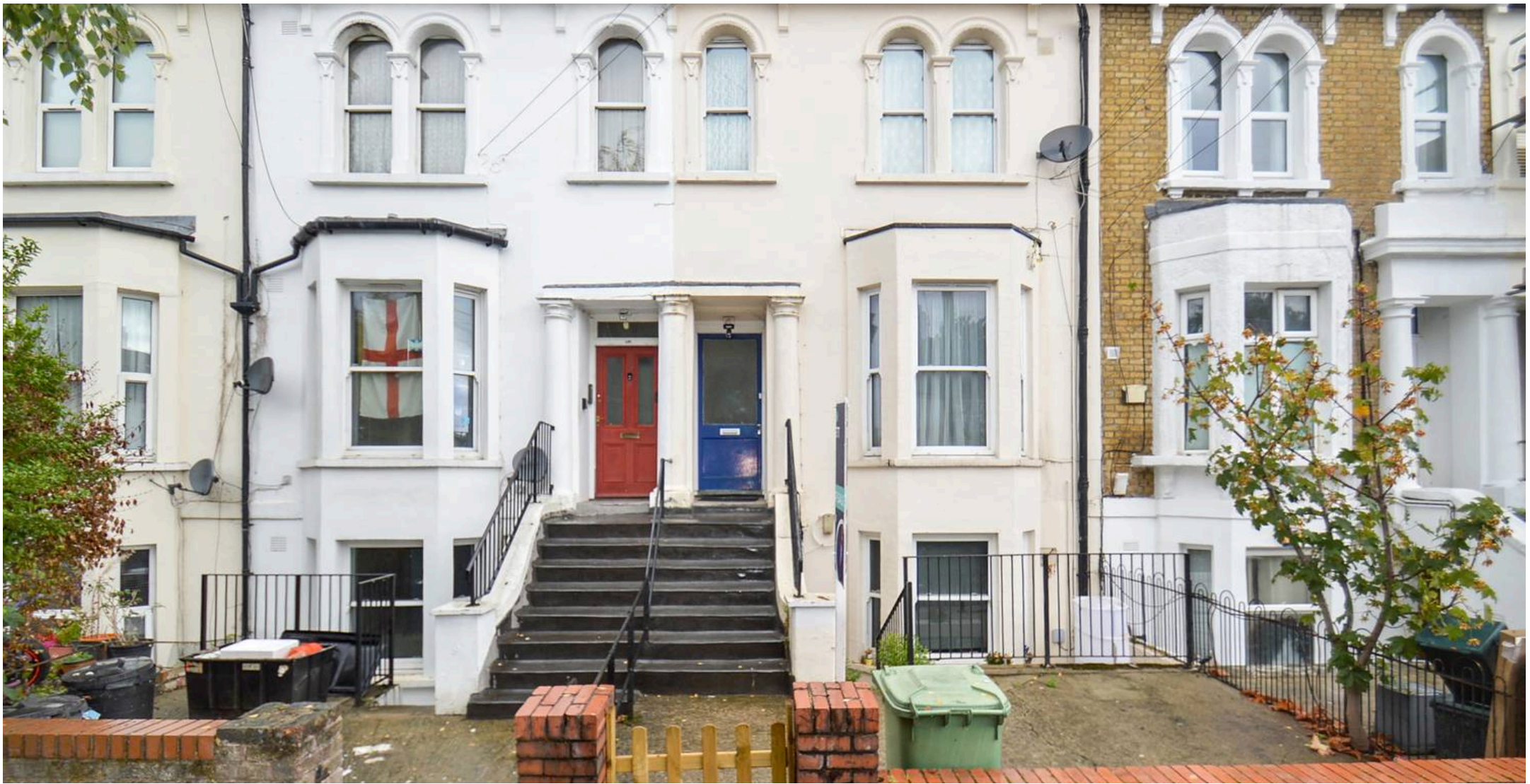




Approximate Gross Internal Area  
48.60 sq m / 523.12 sq ft

Ground Floor

Illustration for identification purposes only, measurements are approximate, not to scale.



## MA-Residential

1st Floor Romer House, 132 Lewisham High Street, London - SE13 6EE

020 8264 4464

[hello@ma-residential.com](mailto:hello@ma-residential.com)

[ma-residential.com/](http://ma-residential.com/)