



11d Glenluce Road, London

London

£275,000

11d Glenluce Road

London

Top floor one bedroom flat in a period building on a prime Blackheath road. Needs refurbishment. Features shared garden, bright rooms, and great access to village, common, and transport.

Council Tax band: C

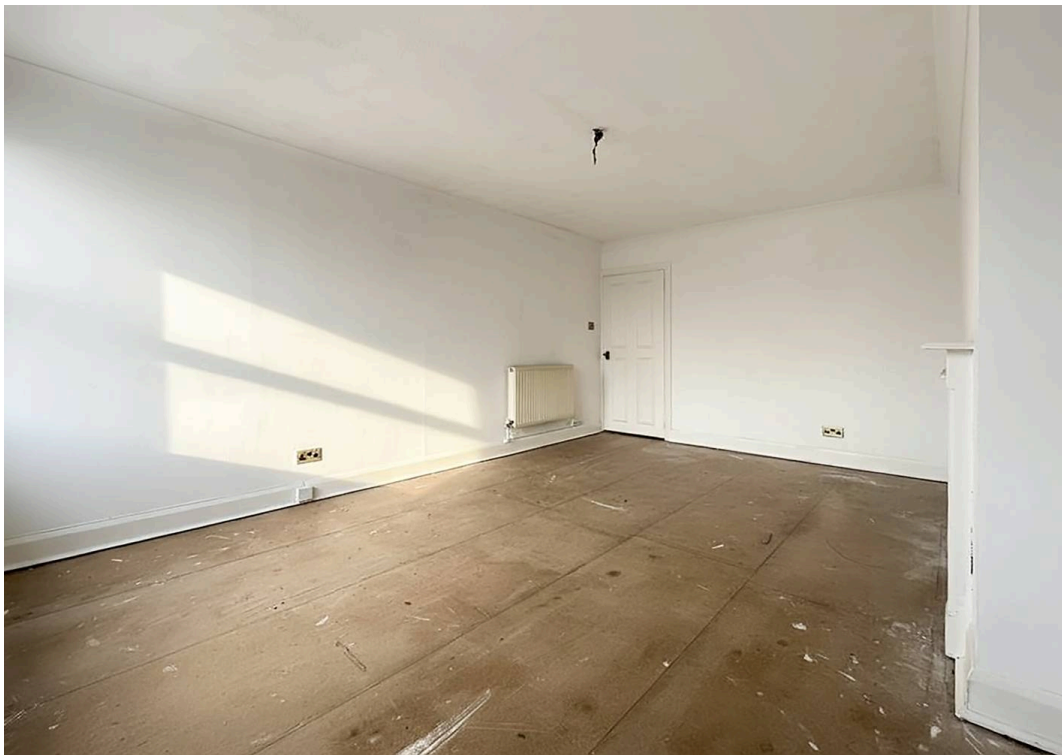
Tenure: Leasehold

EPC Energy Efficiency Rating: C

EPC Environmental Impact Rating: B

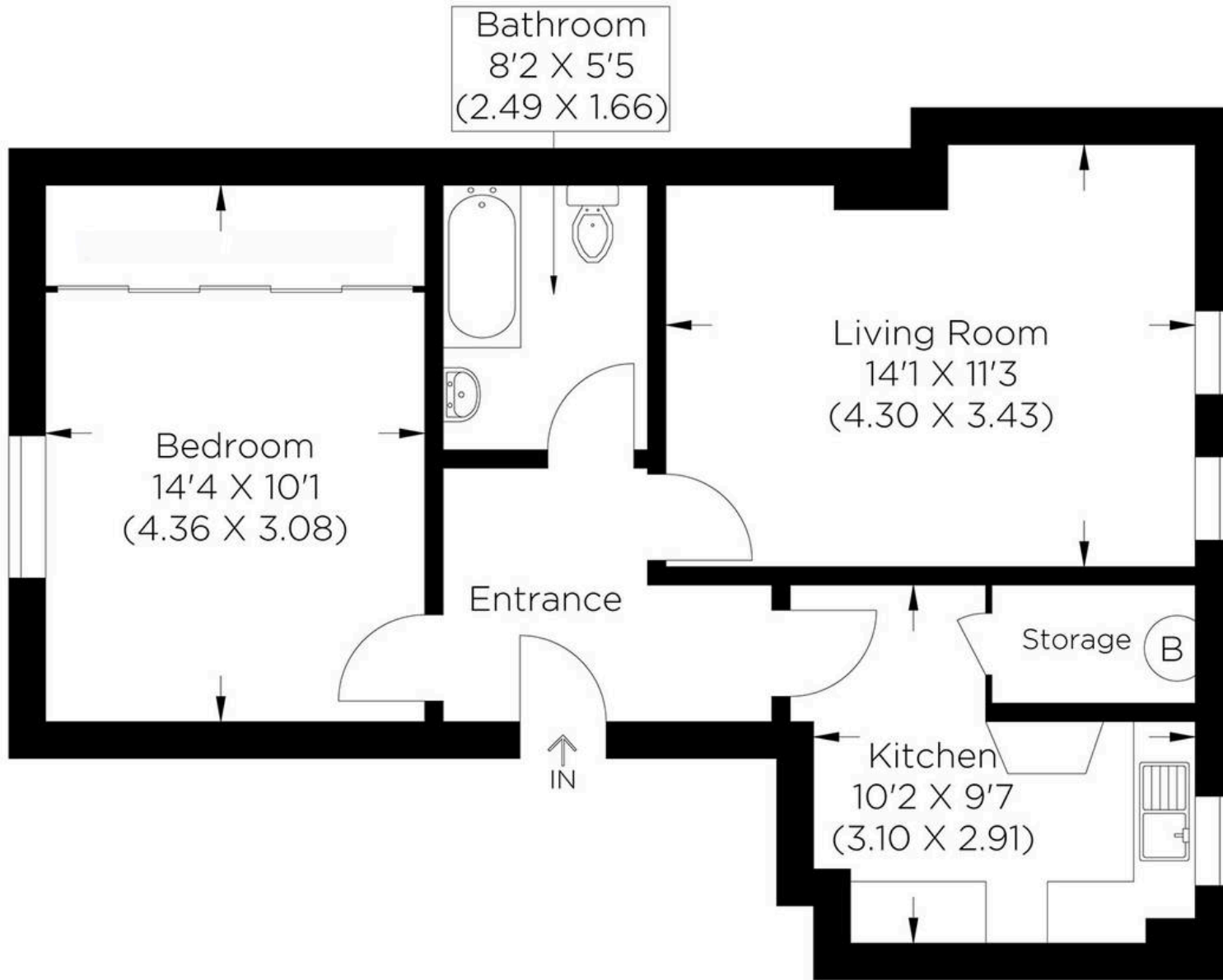
- Chain-free
- Top Floor
- Shared Garden
- Ideal renovation project
- Excellent transport links nearby
- Gas central heating











Approximate gross internal area
46.78 sq m / 503.53 sq ft



MA-Residential

1st Floor Romer House, 132 Lewisham High Street, London - SE13 6EE

020 8264 4464

hello@ma-residential.com

ma-residential.com/