



30 Admiral Seymour Road, London

London

£270,000

30 Admiral Seymour Road

London

Two-bedroom ground floor flat in sought-after Progress Estate, Eltham. Private entrance, garden, needs modernisation. Ideal for first-time buyers. Close to shops, amenities, and transport.

Council Tax band: C

Tenure: Leasehold

EPC Energy Efficiency Rating: C

EPC Environmental Impact Rating: C

- Chain-free
- Incredible Location
- Private Garden
- Ideal renovation project
- Excellent transport links nearby
- Gas central heating

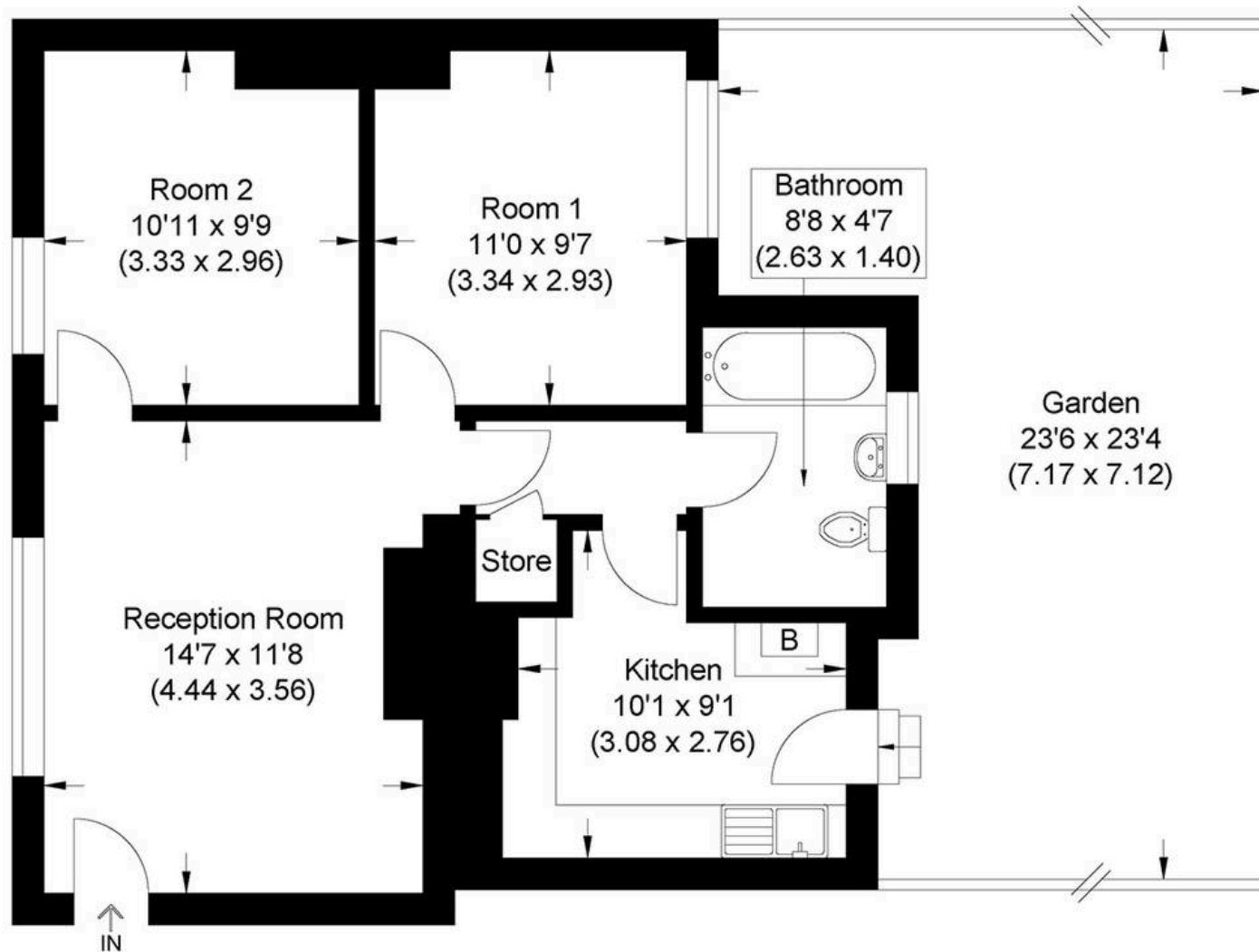








Approximate Gross Internal Area
53.27 sq m / 573.39 sq ft



Ground Floor

Illustration for identification purposes only, measurements are approximate, not to scale.



MA-Residential

1st Floor Romer House, 132 Lewisham High Street, London - SE13 6EE

020 8264 4464

hello@ma-residential.com

ma-residential.com/