



9b, 0 Anerley Park

London

£300,000

9b

0 Anerley Park, London

Bright two-bedroom second floor flat in central Penge with spacious reception, separate kitchen, shared garden, and great transport links. Ideal for first-time buyers or commuters.

Council Tax band: C

Tenure: Leasehold

EPC Energy Efficiency Rating: C

EPC Environmental Impact Rating:

- Chain-free
- Communal gardens
- High Ceilings
- Ideal renovation project
- Excellent transport links nearby

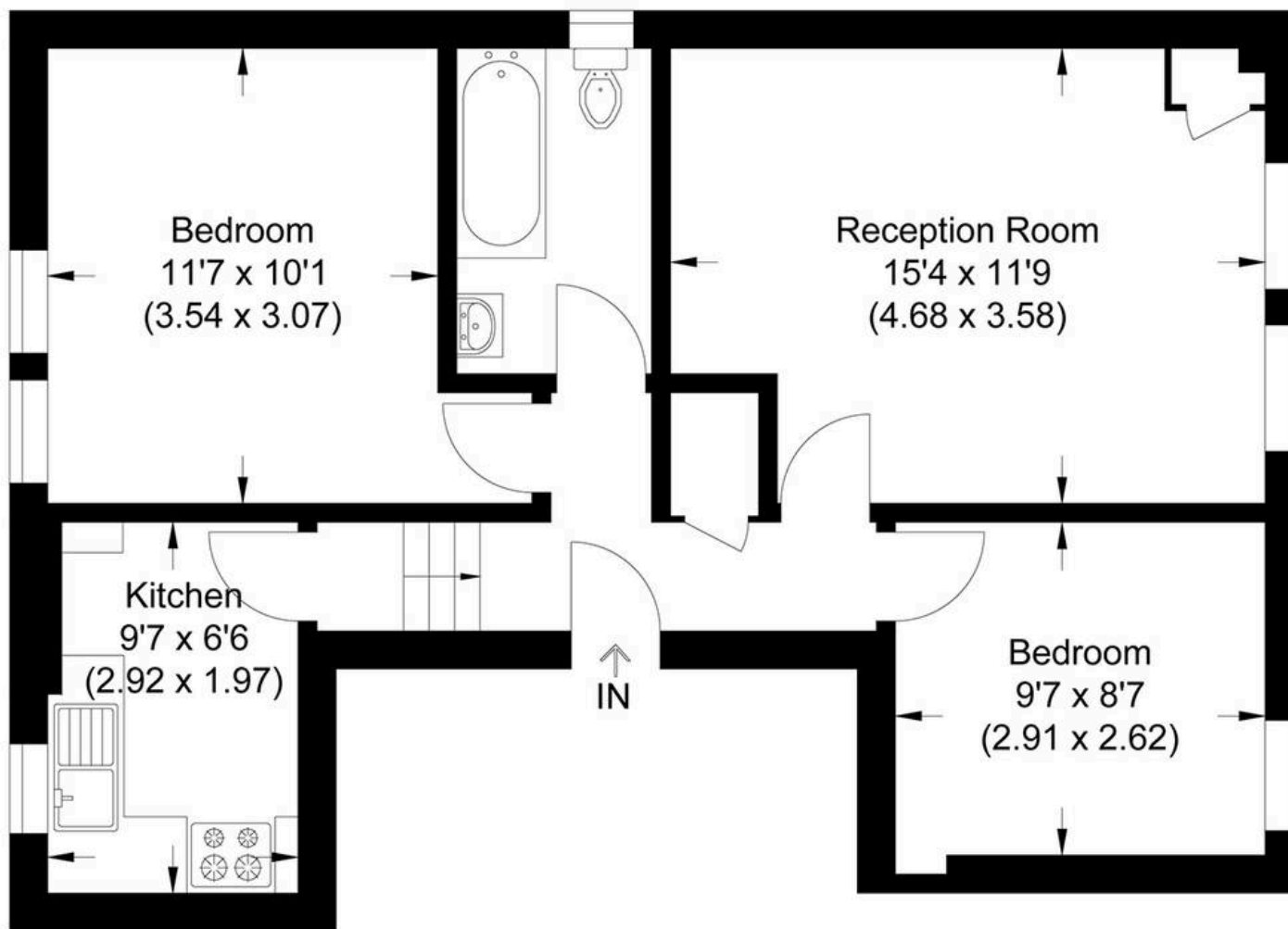








Approximate Gross Internal Area
53.42 sq m / 575.0 sq ft



Second Floor

Illustration for identification purposes only, measurements are approximate, not to scale.



MA-Residential

1st Floor Romer House, 132 Lewisham High Street, London - SE13 6EE

020 8264 4464

hello@ma-residential.com

ma-residential.com/