



Flat 2, 5 Werndee Road, London

London

Offers Over £250,000

Flat 2

5 Werndee Road, London

Chain-free two-bedroom first floor flat on Werndee Road. Spacious 777 sq ft, bright, with large reception, separate kitchen, and great potential. Close to transport, parks, and local amenities.

Council Tax band: C

Tenure: Leasehold

EPC Energy Efficiency Rating: E

EPC Environmental Impact Rating: D

- Chain-free
- Incredible Location
- Electric Heating
- Ideal renovation project
- Excellent transport links nearby
- Double Glazing

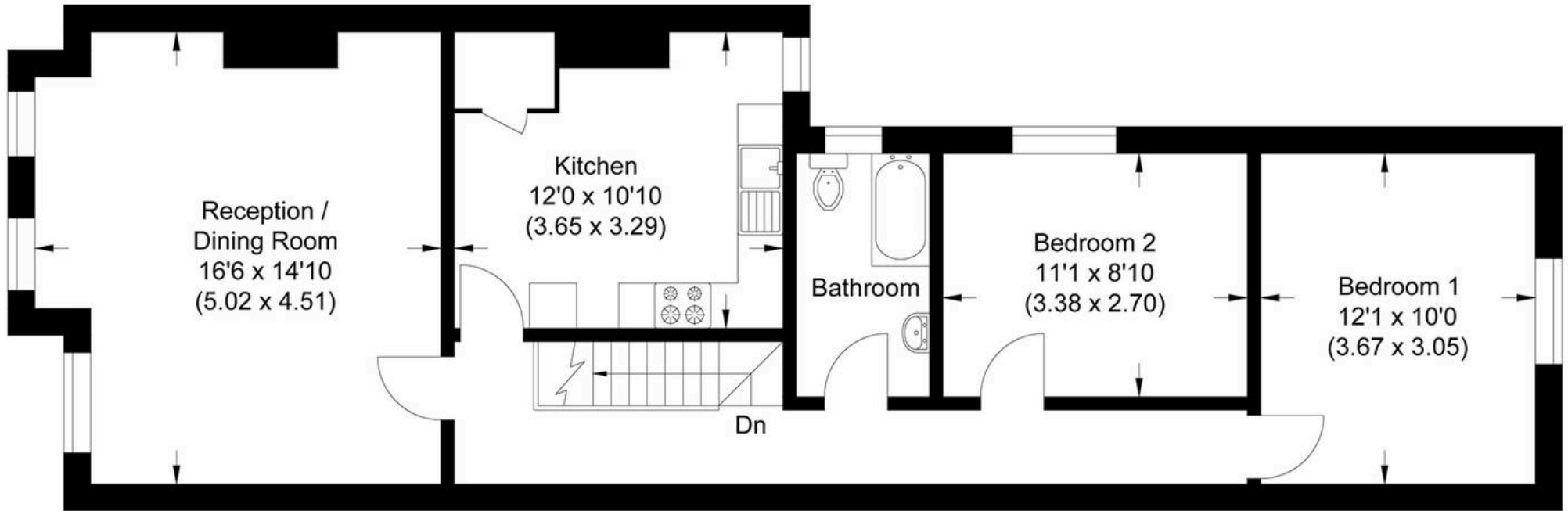




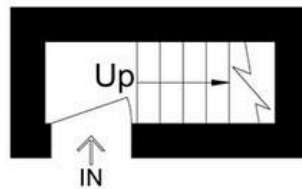




Approximate Gross Internal Area
72.20 sq m / 777.15 sq ft



First Floor



Ground Floor



Illustration for identification purposes only, measurements are approximate, not to scale.



MA-Residential

1st Floor Romer House, 132 Lewisham High Street, London - SE13 6EE

020 8264 4464

hello@ma-residential.com

ma-residential.com/