



35b Collingtree Road, London

London

In Excess of £375,000

35b Collingtree Road

London

Spacious two-bedroom first floor apartment on Collingtree Road. Chain-free, new 125-year lease, £1,000 service charge allowance, private entrance, near stations and local amenities.

Council Tax band: C

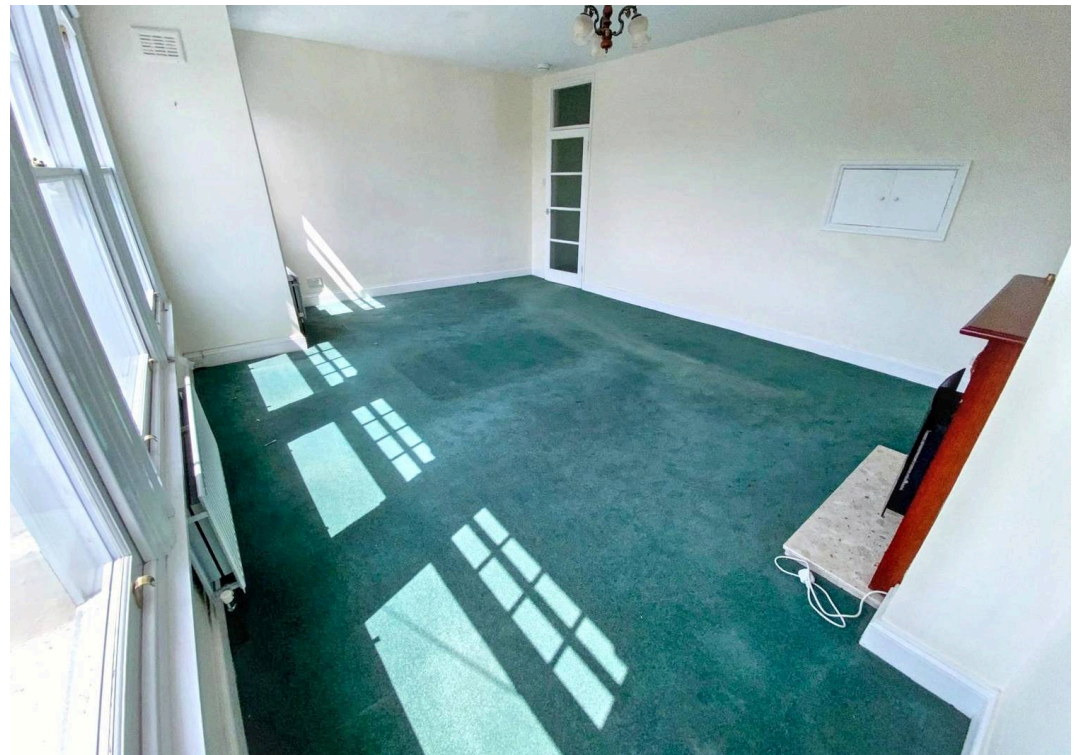
Tenure: Leasehold

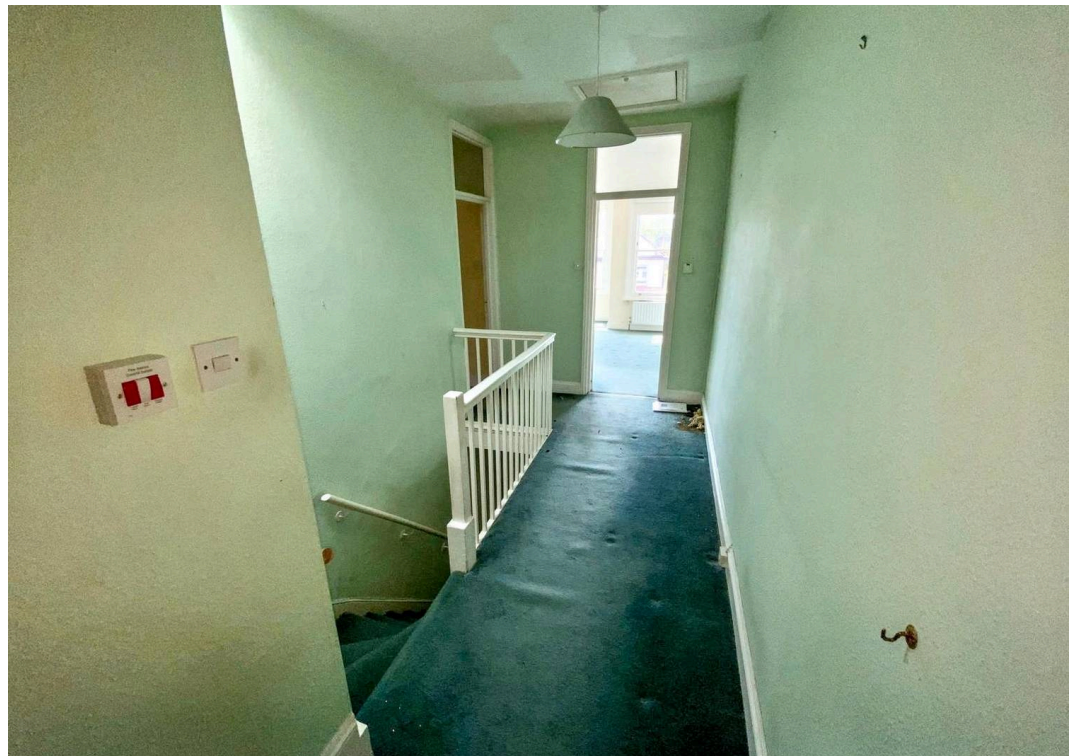
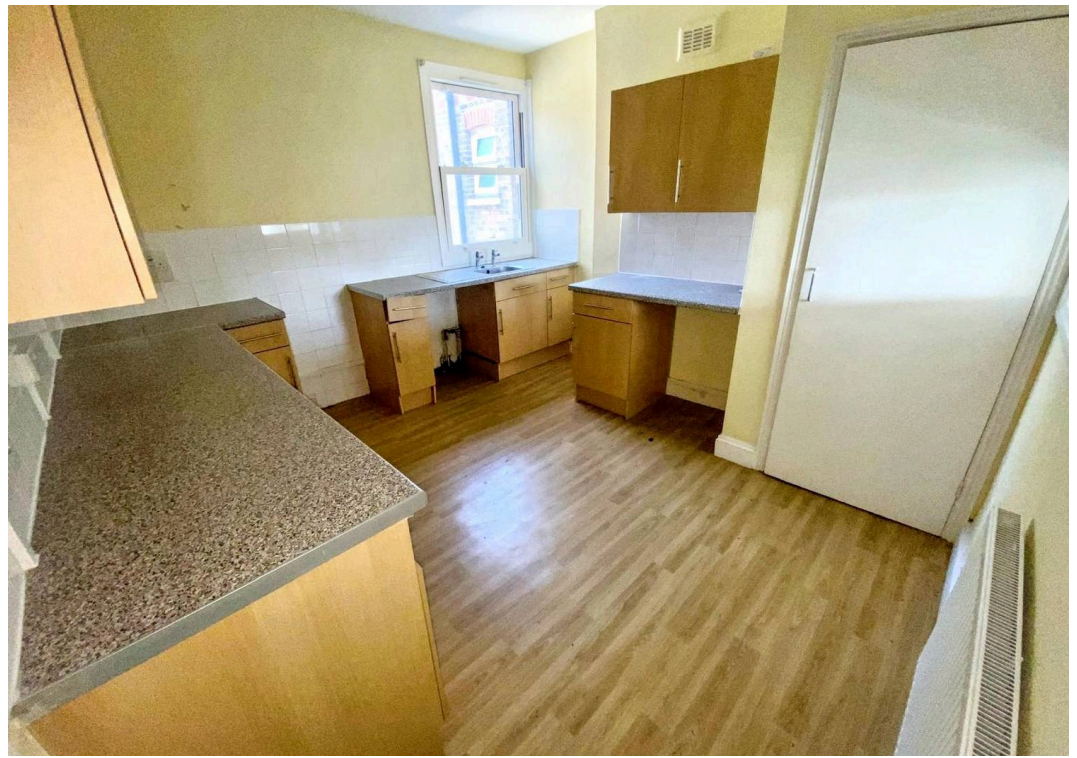
EPC Energy Efficiency Rating: C

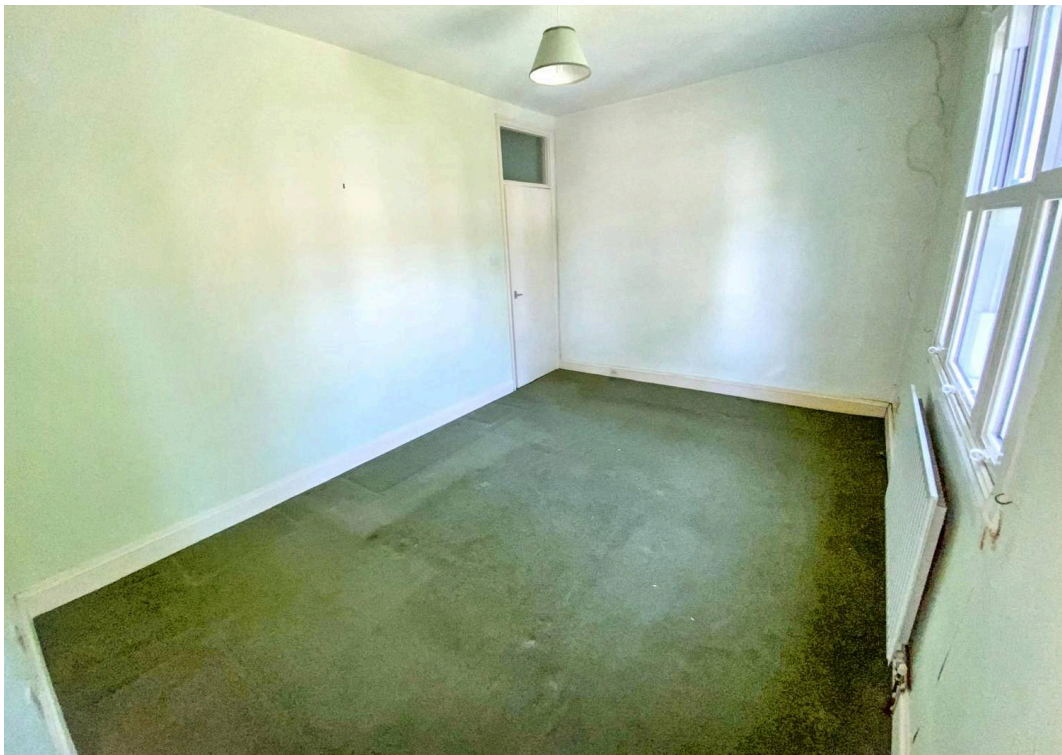
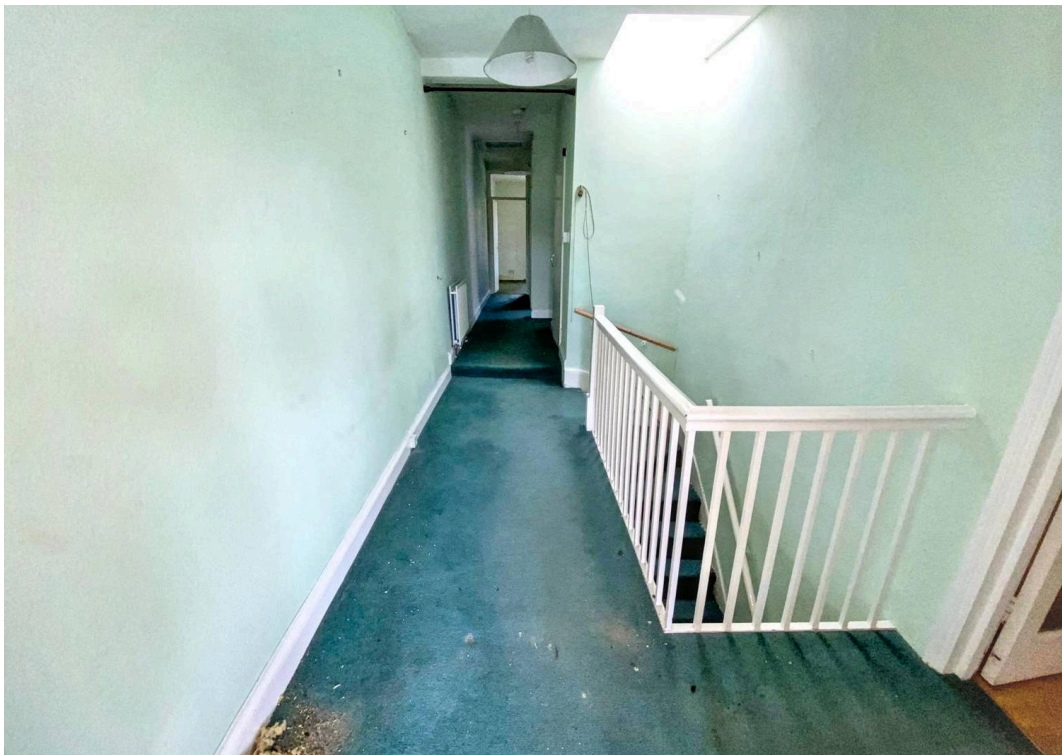
EPC Environmental Impact Rating: C

- Chain-free
- Top Floor
- High Ceilings
- Ideal renovation project
- £1000 allowance towards S/C
- New Roof











Approximate Gross Internal Area
92.10 sq m / 991.35 sq ft

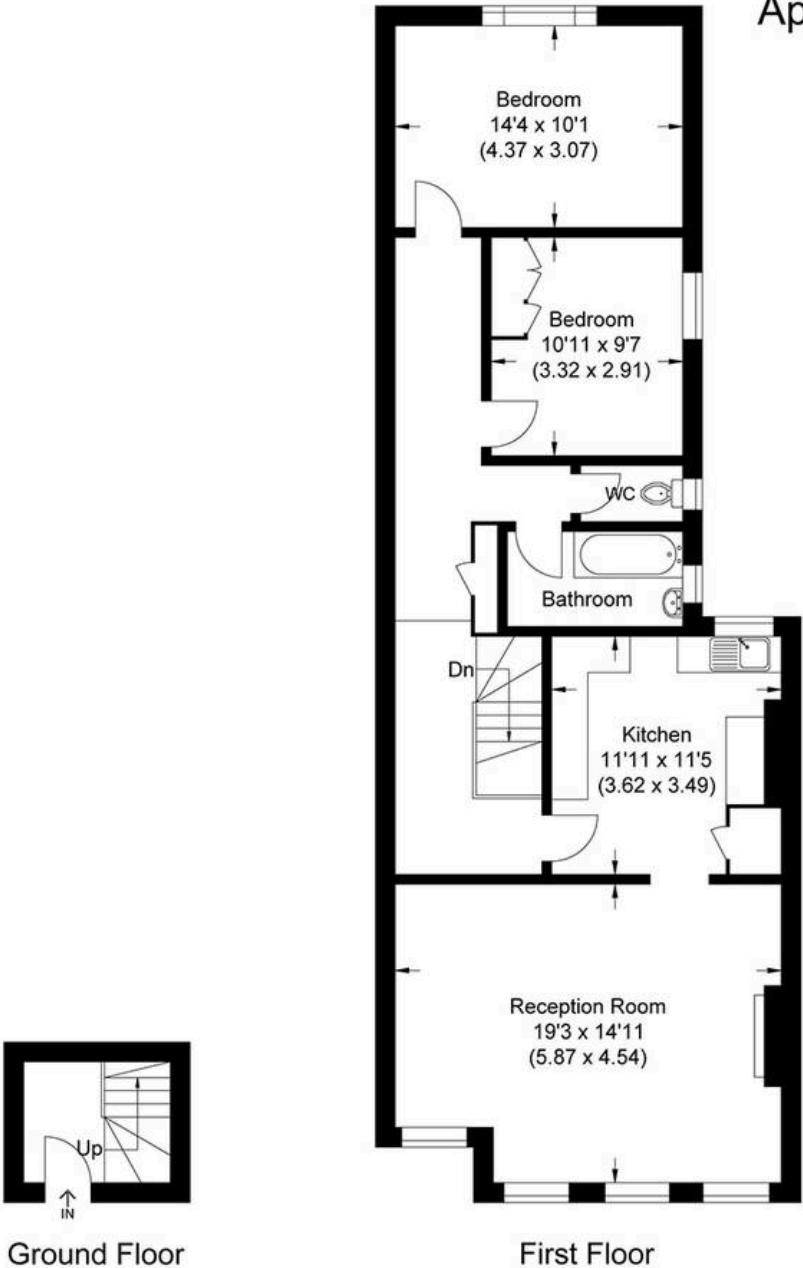


Illustration for identification purposes only, measurements are approximate, not to scale.



MA-Residential

1st Floor Romer House, 132 Lewisham High Street, London - SE13 6EE

020 8264 4464

hello@ma-residential.com

ma-residential.com/