



5b Glenluce Road, London

London

£290,000

# 5b Glenluce Road

London

Chain-free one-bedroom garden conversion with basement in prime Blackheath SE3. Spacious, with shared gardens and excellent potential. Close to village, parks and station. Ideal to modernise.

Council Tax band: C

Tenure: Leasehold

EPC Energy Efficiency Rating: E

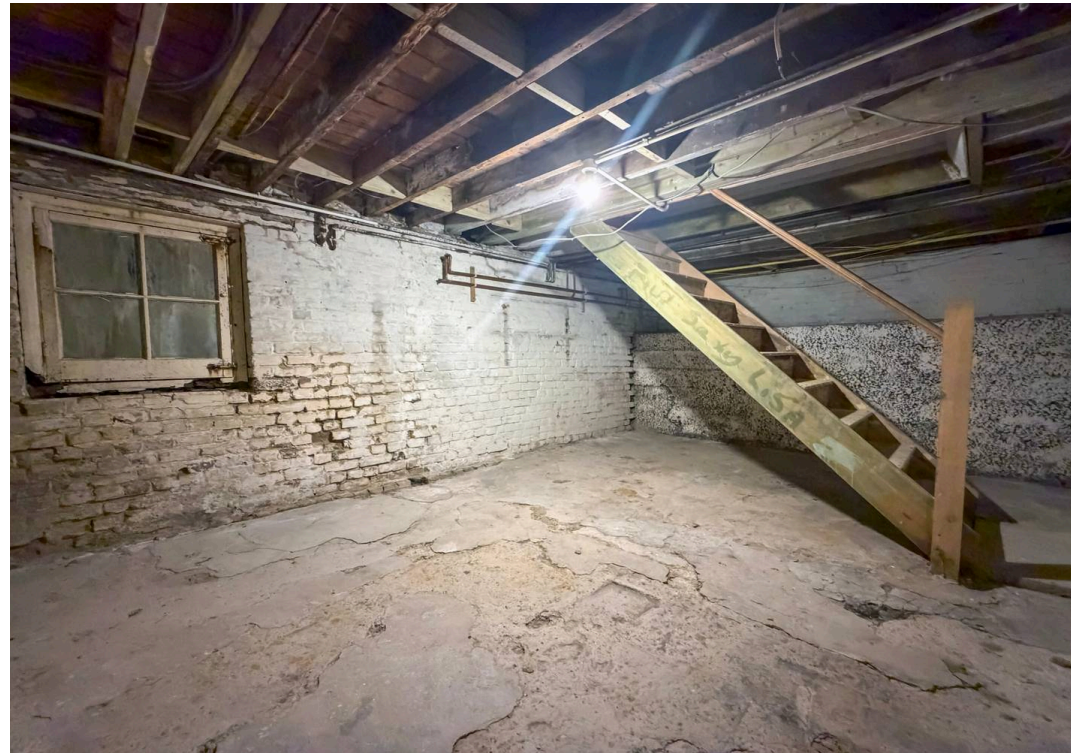
EPC Environmental Impact Rating:

- Chain-free
- Communal Gardens
- High Ceilings
- Ideal Renovation Project
- Excellent Transport Links Nearby
- Large Basement









Approximate Gross Internal Area  
67.17 sq m / 723.01 sq ft

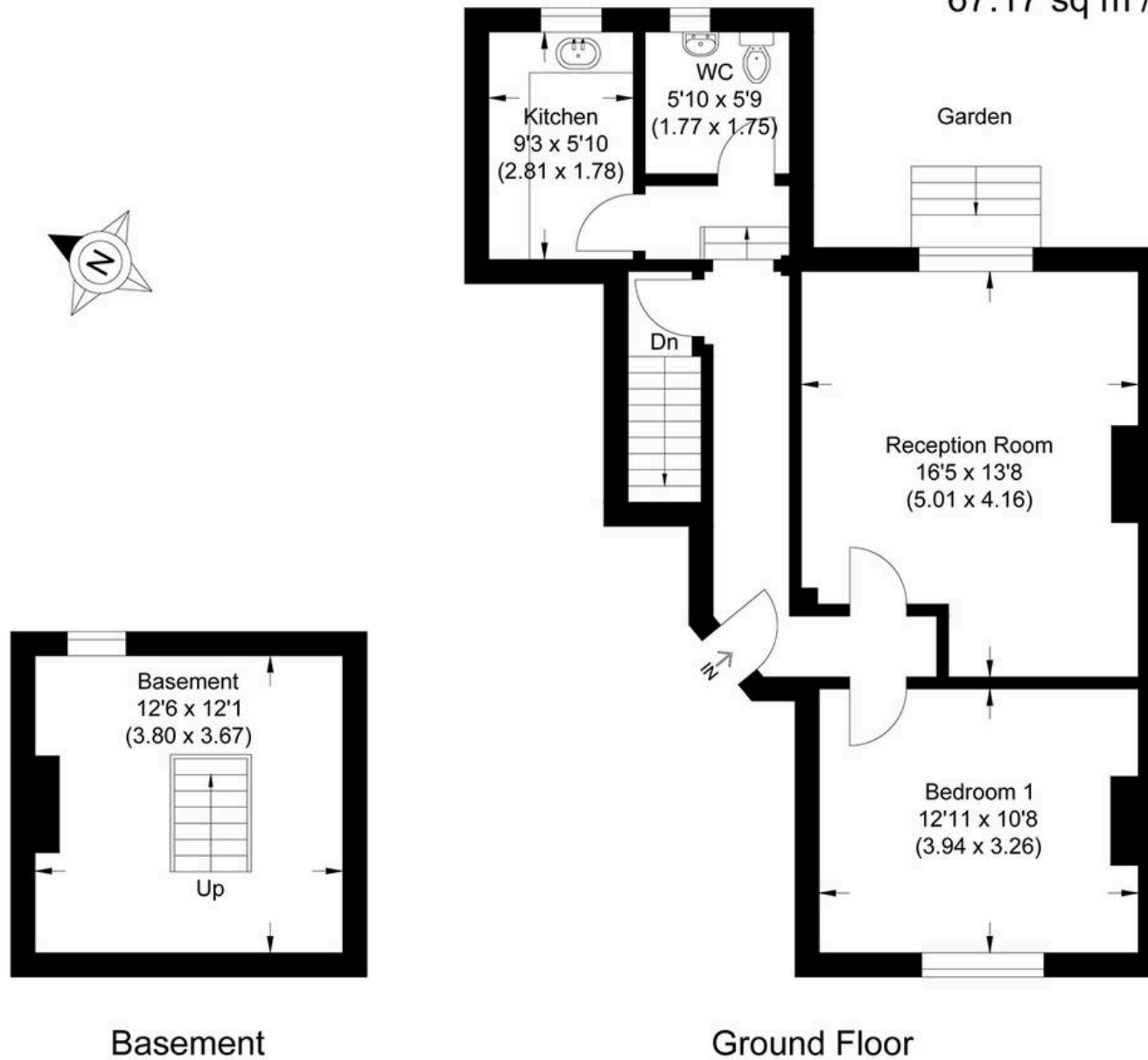
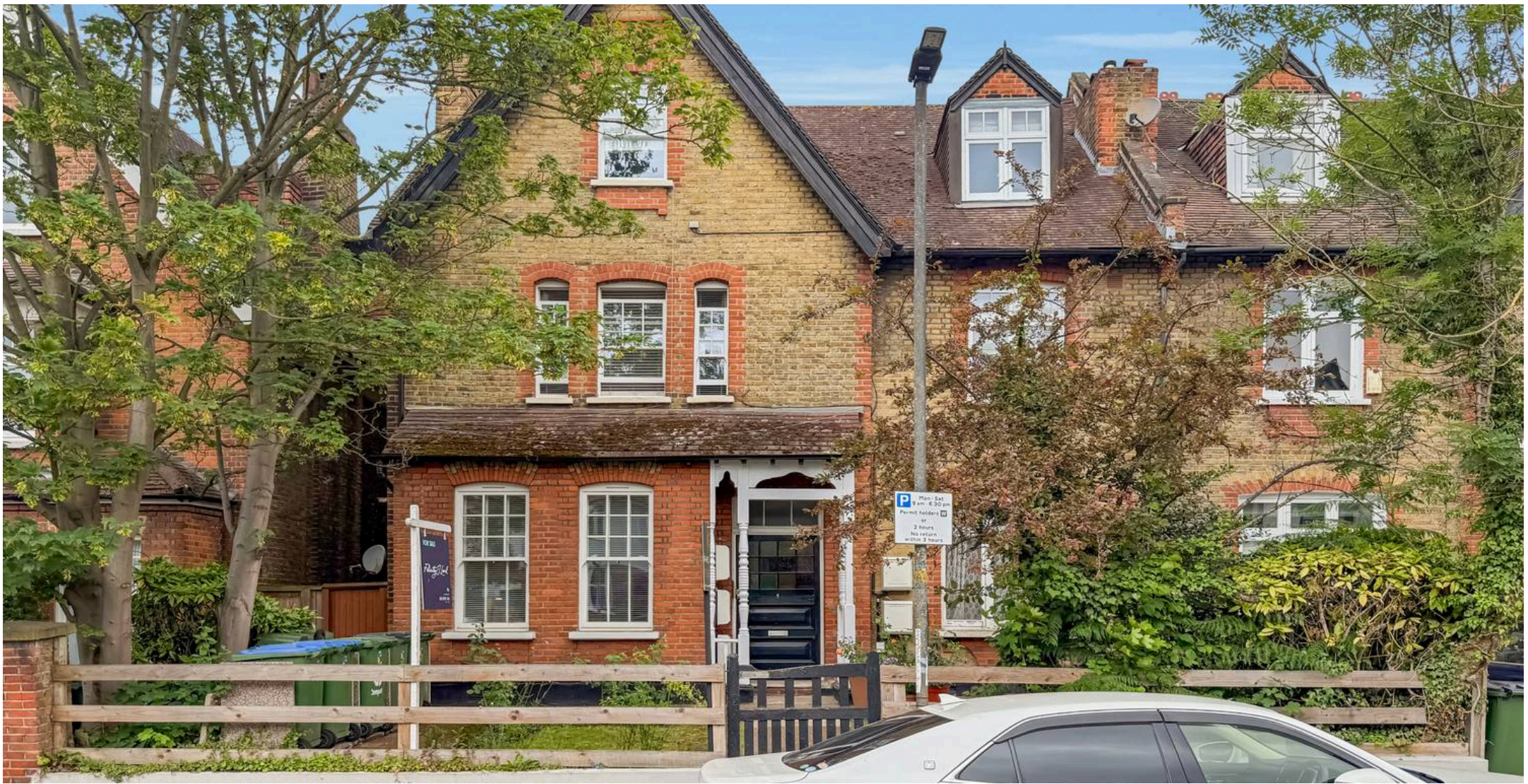


Illustration for identification purposes only, measurements are approximate, not to scale.



## MA-Residential

1st Floor Romer House, 132 Lewisham High Street, London - SE13 6EE

020 8264 4464

[hello@ma-residential.com](mailto:hello@ma-residential.com)

[ma-residential.com/](https://ma-residential.com/)