



247 High Street, St. Mary Cray

Orpington

£280,000

# 247 High Street

St. Mary Cray, Orpington

Chain free two-bedroom end terrace with front garden, near St Mary Cray Station and shops. Freehold, ideal for first-time buyers or as a refurbishment project. Book a viewing now.

Council Tax band: C

Tenure: Freehold

EPC Energy Efficiency Rating: D

EPC Environmental Impact Rating: D

- Chain-free
- Private front garden
- Double Glazing
- Ideal renovation project
- Excellent transport links nearby









Approximate Gross Internal Area  
58.50 sq m / 629.68 sq ft

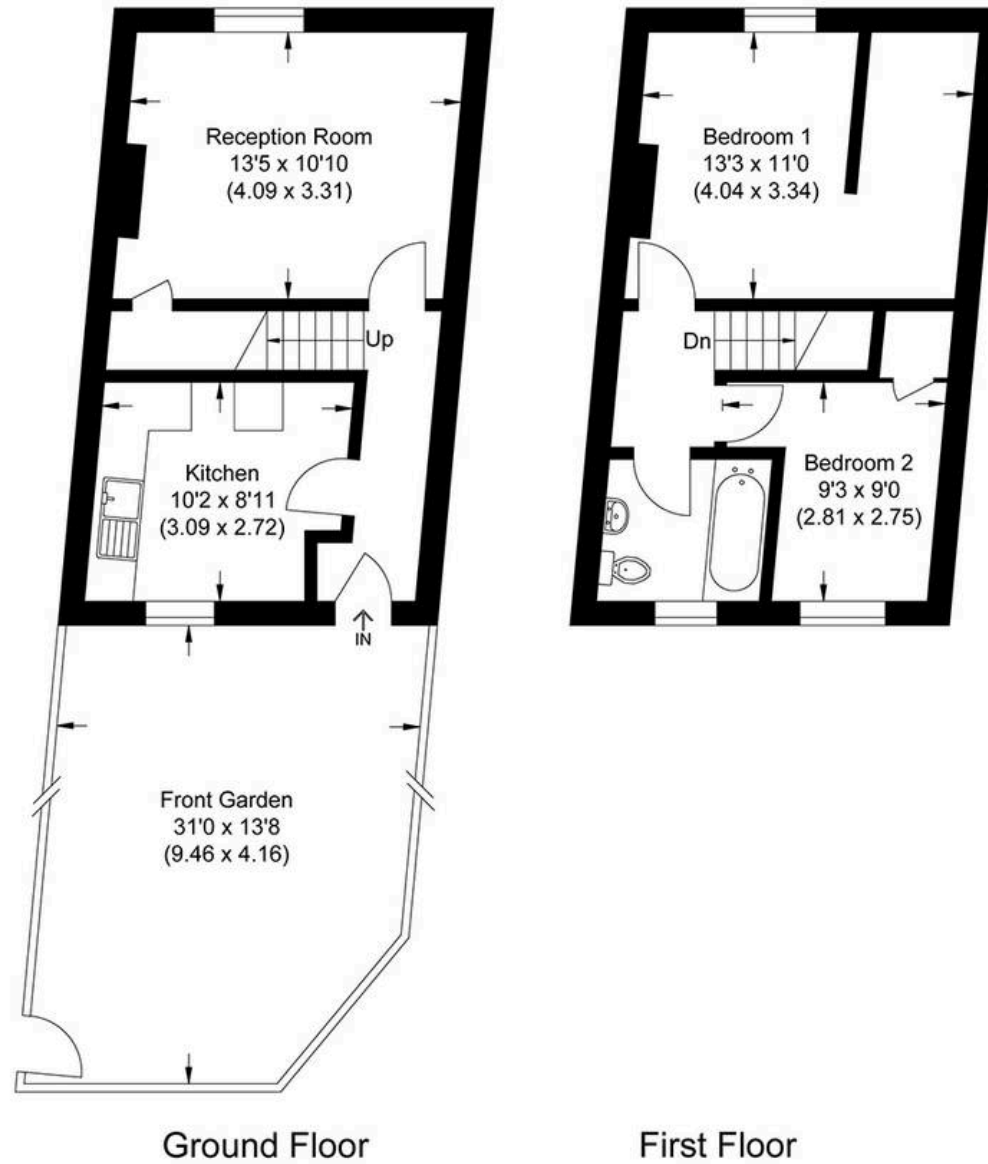


Illustration for identification purposes only, measurements are approximate, not to scale.



## MA-Residential

1st Floor Romer House, 132 Lewisham High Street, London - SE13 6EE

020 8264 4464

[hello@ma-residential.com](mailto:hello@ma-residential.com)

[ma-residential.com/](http://ma-residential.com/)