



Flat B, 22 Lewisham Park, London

London

£260,000

Flat B

22 Lewisham Park, London

Ground floor one-bedroom flat with shared garden on sought-after Lewisham Park. Requiring full modernisation, this is a fantastic opportunity to create your ideal home in a well-connected location.

Council Tax band: B

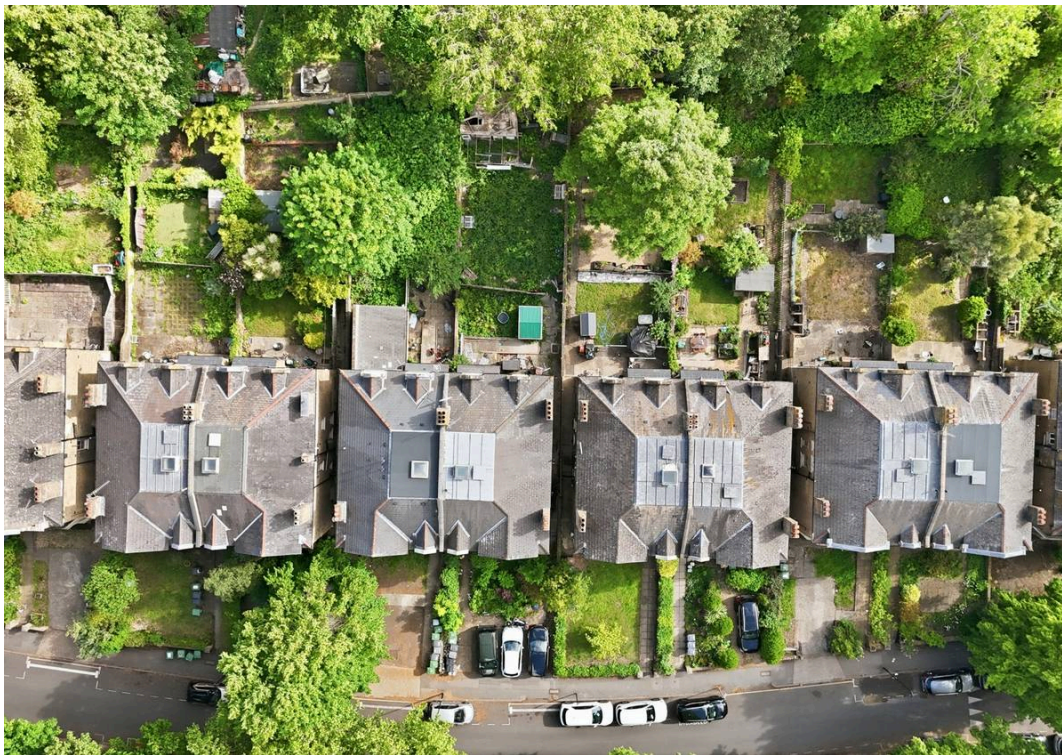
Tenure: Leasehold

EPC Energy Efficiency Rating: C

EPC Environmental Impact Rating: C

- Chain-free
- Shared rear garden
- Long Lease
- Ideal renovation project
- Excellent transport links nearby
- Double Glazing



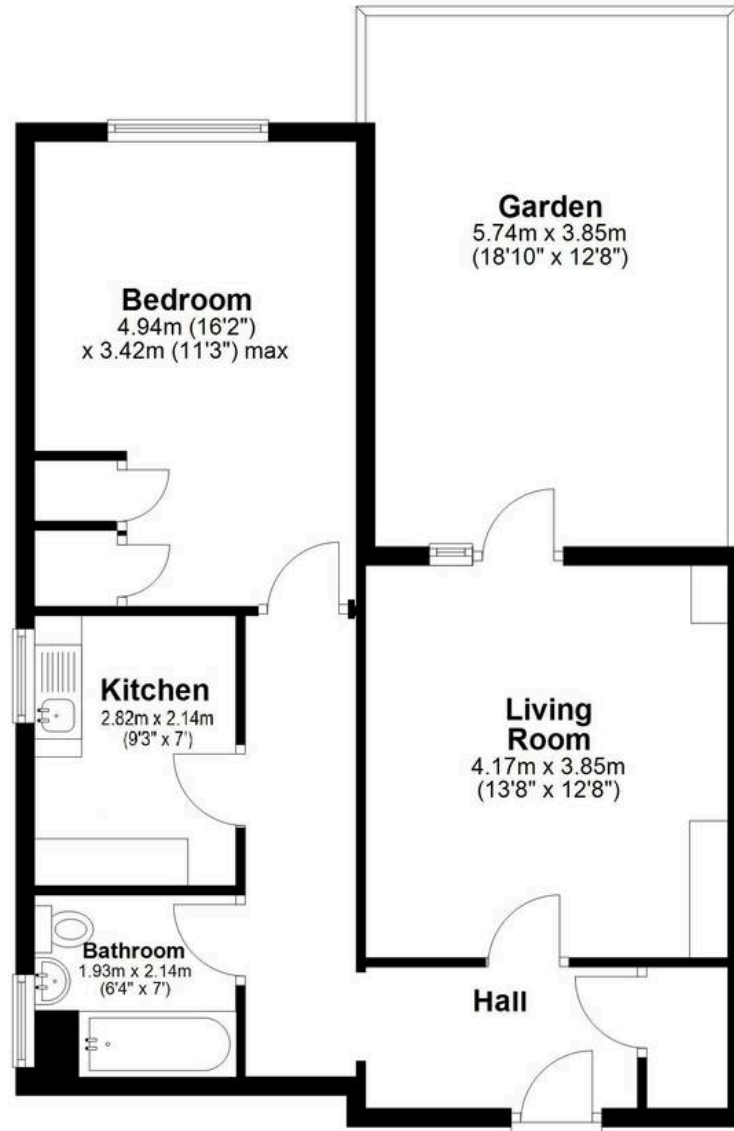






Ground Floor

Approx. 56.7 sq. metres (609.9 sq. feet)
(excluding Garden)



Total area: approx. 56.7 sq. metres (609.9 sq. feet)

This floor plan has been created by a third party and should be used as a general outline for guidance only. Any areas, measurements or distances quoted are approximate and any intending purchaser or lessee should satisfy themselves by inspection, searches, enquiries and/or full survey as to the correctness of each statement. We accept no responsibility or liability for any loss whatsoever that may arise as a result of this plan and the information contained within.

© @modephoto.uk | www.modephoto.co.uk
Plan produced using PlanUp.□

Lewisham Park



MA-Residential

1st Floor Romer House, 132 Lewisham High Street, London - SE13 6EE

020 8264 4464

hello@ma-residential.com

ma-residential.com/