



8 Trafalgar Close, London

London

Offers Over £650,000

8 Trafalgar Close

London

Offered to the market chain free, this beautifully presented two-bedroom house occupies a highly sought-after position in the heart of Rotherhithe, combining stylish modern accommodation with excellent transport connections and a superb range of local amenities.

Arranged over two floors, the property offers two generous double bedrooms, each benefiting from its own private en-suite bathroom, making it an ideal home for professionals, sharers, guests or those seeking additional flexibility. A separate guest cloakroom on the ground floor further enhances the practicality of the layout.

The centrepiece of the home is the bright and spacious open-plan living area, designed to create a sociable and welcoming environment for both everyday living and entertaining. The contemporary fitted kitchen offers ample storage and preparation space, while large windows allow natural light to flood the accommodation throughout the day.

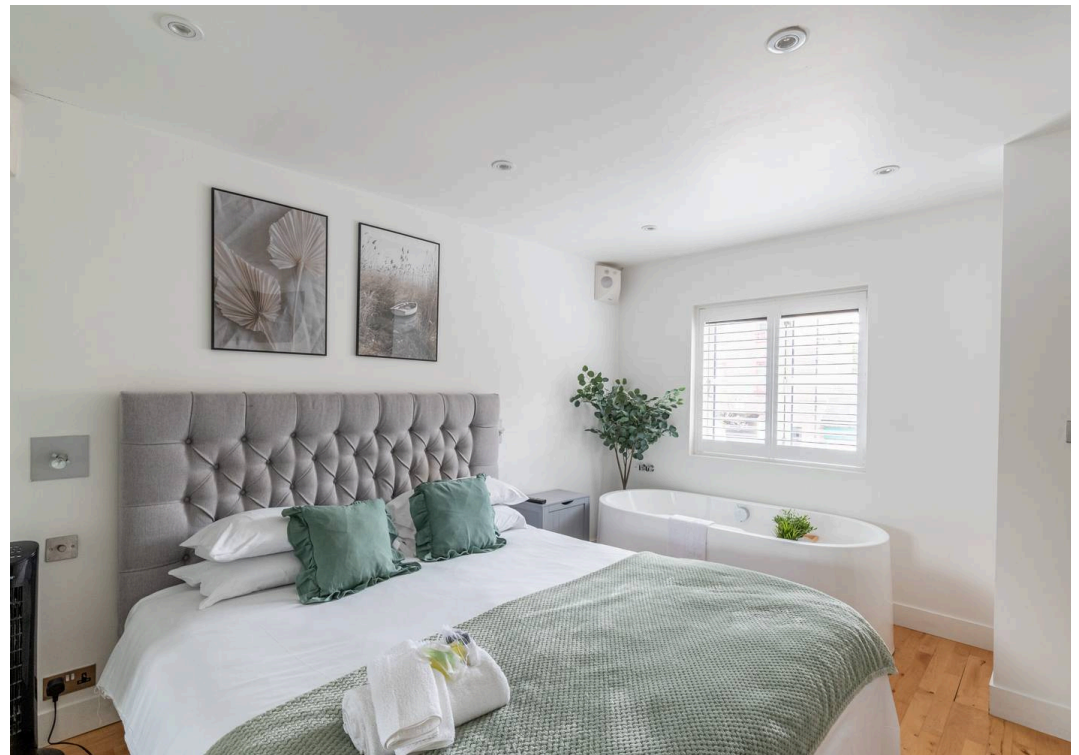
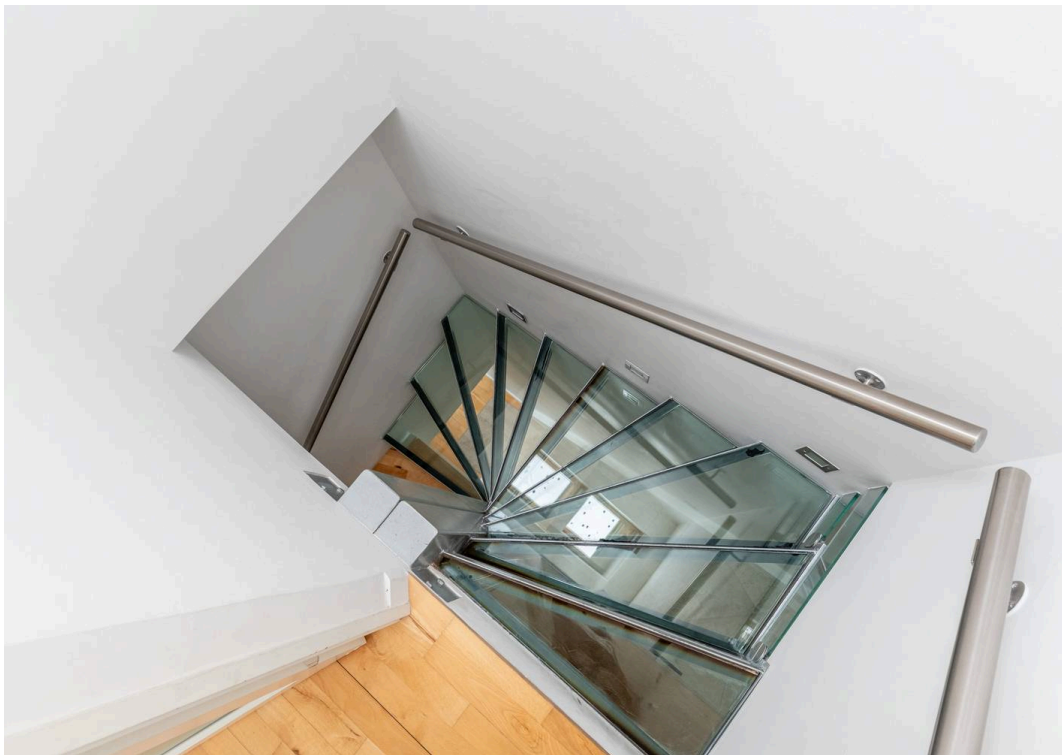
Beautifully maintained by the current owners, the property is presented in excellent condition and is ready for immediate occupation. The modern interiors, well-balanced accommodation and low-maintenance lifestyle make this a particularly attractive option for first-time buyers, downsizers and investors alike.

Trafalgar Close enjoys a peaceful residential setting within easy reach of the Thames Path and the many green spaces that make Rotherhithe such a desirable place to live. Canada Water and Rotherhithe stations are both conveniently accessible, providing fast connections to Canary



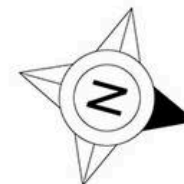
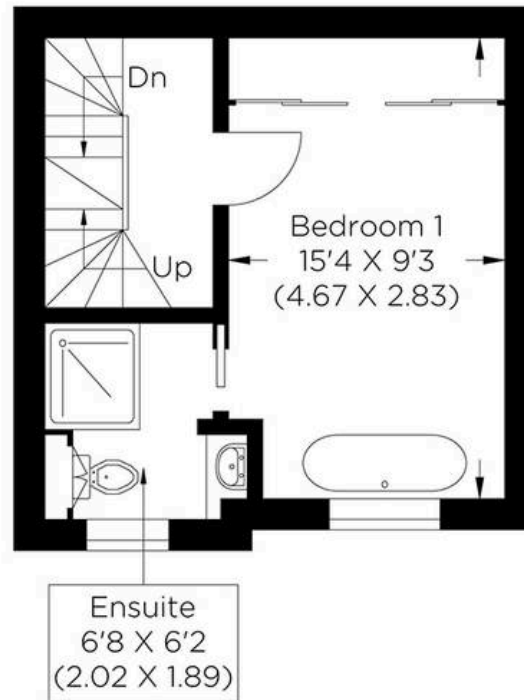
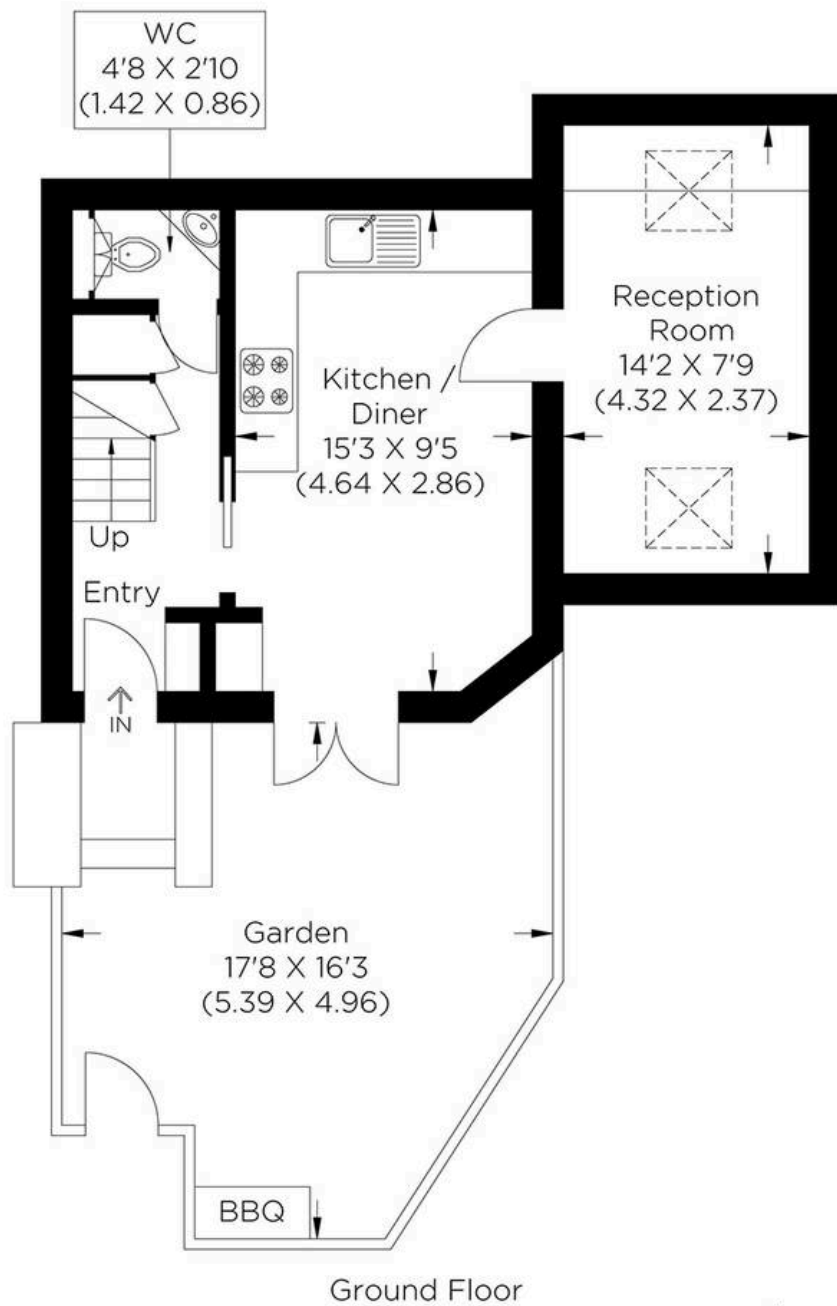












Approximate gross internal area
68.41 sq m / 736.35 sq ft



MA-Residential

1st Floor Romer House, 132 Lewisham High Street, London - SE13 6EE

020 8264 4464

hello@ma-residential.com

ma-residential.com/